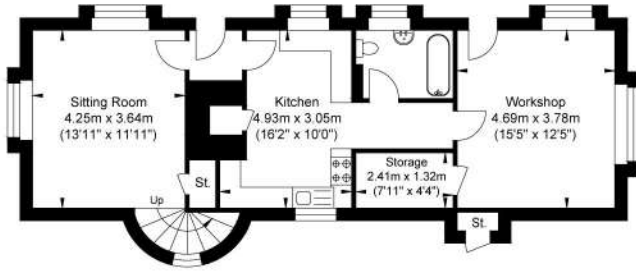
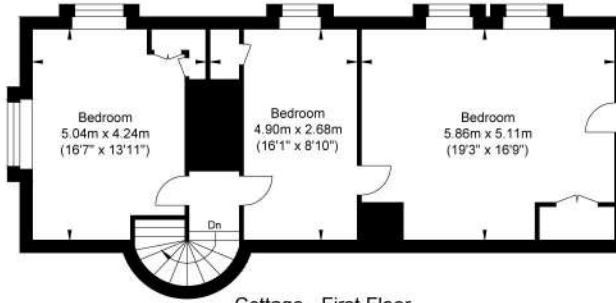


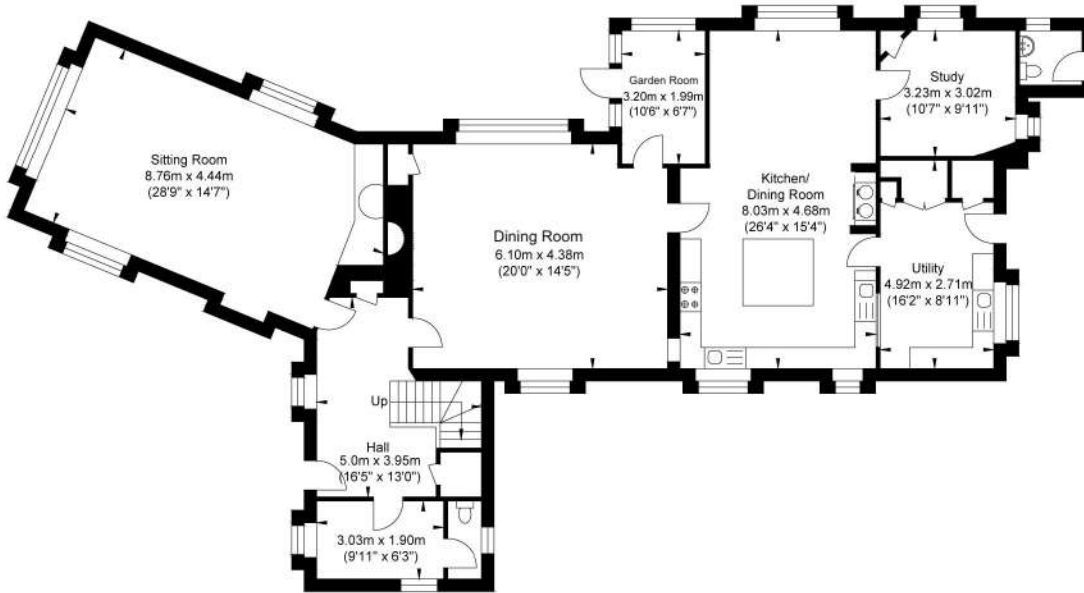
Long Copse, Pitch Hill



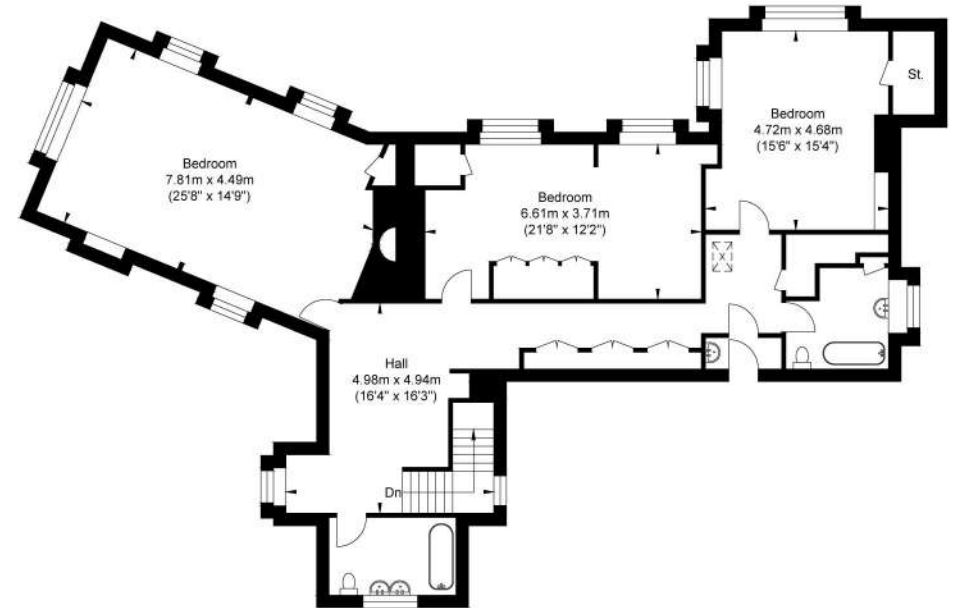
Cottage - Ground Floor
Approximate Floor Area
665.74 sq ft
(61.85 sq m)



Cottage - First Floor
Approximate Floor Area
778.12 sq ft
(72.29 sq m)



Ground Floor
Approximate Floor Area
1832.55 sq ft
(170.25 sq m)

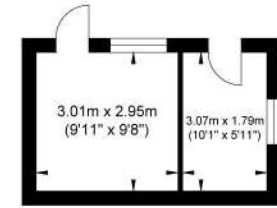
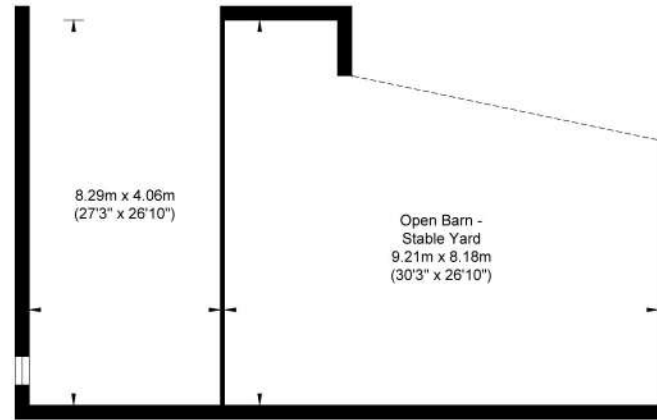
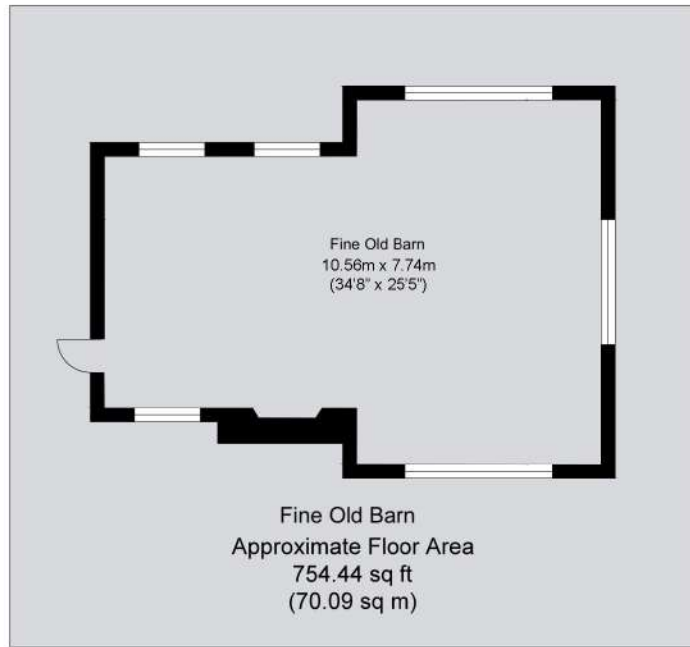


First Floor
Approximate Floor Area
1469.05 sq ft
(136.48 sq m)

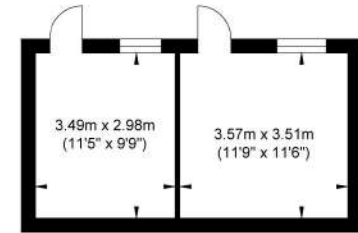


House Approximate Gross Internal Area = 306.73 sq m / 3301.60 sq ft
 Cottage Approximate Gross Internal Area = 134.14 sq m / 1443.86 sq ft
 Illustration for identification purposed only, measurements are approximate, not to scale.

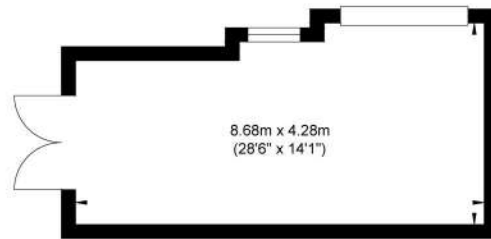
Long Copse, Pitch Hill



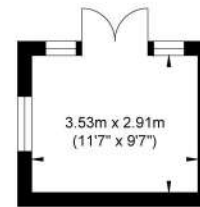
Stable 3 & Tack Room
Approximate Floor Area
155.53 sq ft
(14.45 sq m)



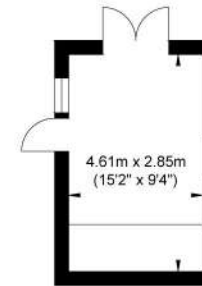
Stable 1 & 2
Approximate Floor Area
250.15 sq ft
(23.24 sq m)



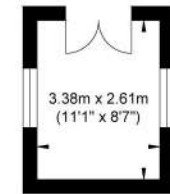
Garage
Approximate Floor Area
362.20 sq ft
(33.65 sq m)



Tennis Court Cabin
Approximate Floor Area
110.54 sq ft
(10.27 sq m)



Storage Shed
Approximate Floor Area
141.43 sq ft
(13.14 sq m)



Potting Shed
Approximate Floor Area
94.93 sq ft
(8.82 sq m)



Fine Old Barn Approximate Gross Internal Area = 70.09 sq m / 754.44 sq ft
Outbuildings Approximate Gross Internal Area = 200.27 sq m / 2,155.65 sq ft

Illustration for identification purposes only, measurements are approximate, not to scale.