

Corton Denham House, Corton Denham, Sherborne, Dorset DT9 4LR

Gross Internal Area (Approx.)

Main House = 731 sq m / 7,868 sq ft

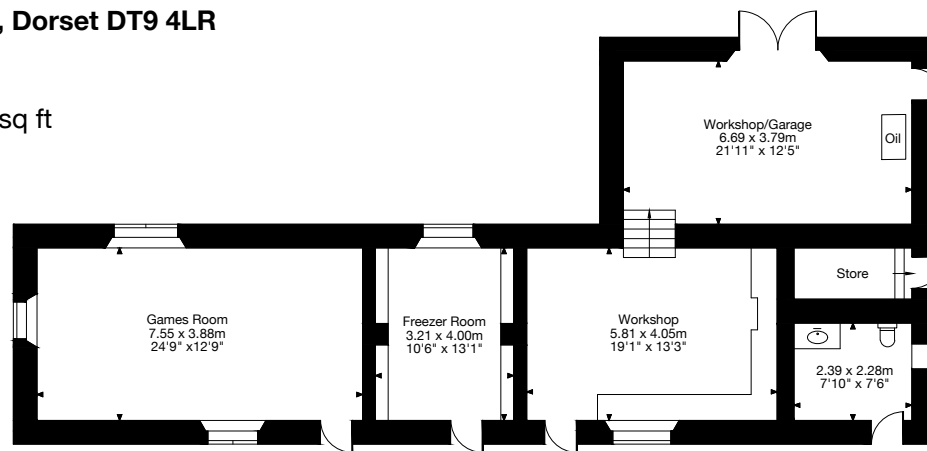
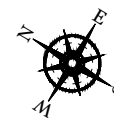
The Stable Cottage and Apartment = 190 sq m / 2,045 sq ft

The Clock House = 98 sq m / 1,054 sq ft

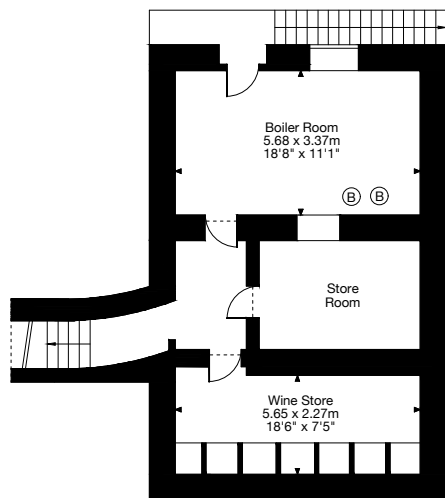
Garage = 31 sq m / 333 sq ft

Outbuildings = 219 sq m / 2,357 sq ft

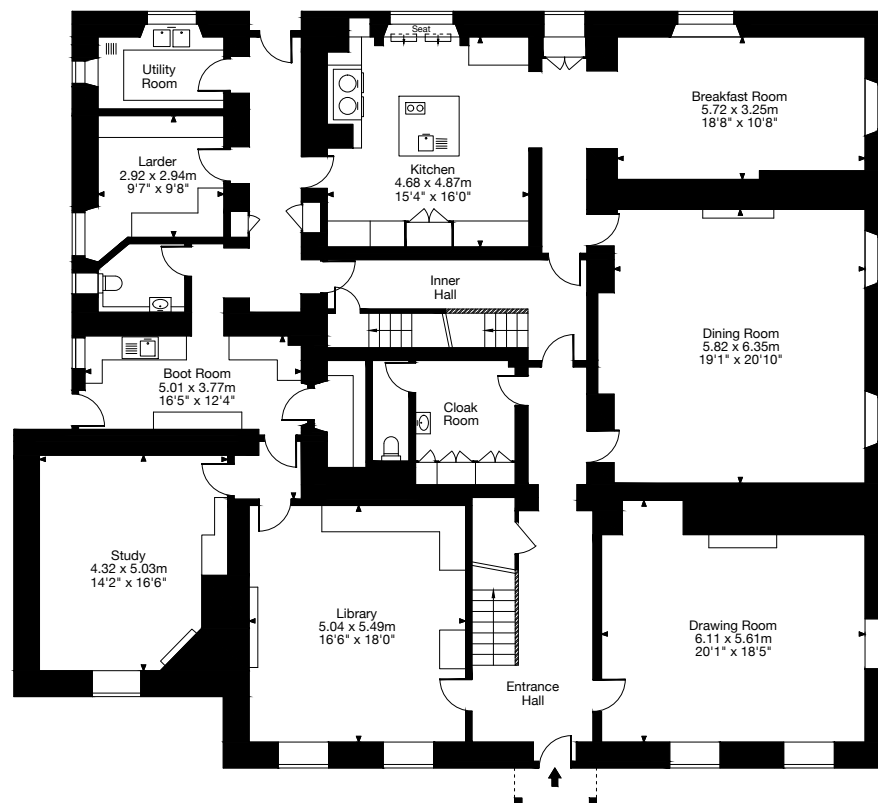
Total Area = 1,269 sq m / 13,657 sq ft



Ground Floor
The Stable Cottage



Cellar



Ground Floor
Main House

Corton Denham House, Corton Denham, Sherborne, Dorset DT9 4LR

Gross Internal Area (Approx.)

Main House = 731 sq m / 7,868 sq ft

The Stable Cottage and Apartment = 190 sq m / 2,045 sq ft

The Clock House = 98 sq m / 1,054 sq ft

Garage = 31 sq m / 333 sq ft

Outbuildings = 219 sq m / 2,357 sq ft

Total Area = 1,269 sq m / 13,657 sq ft



Corton Denham House, Corton Denham, Sherborne, Dorset DT9 4LR

Gross Internal Area (Approx.)

Main House = 731 sq m / 7,868 sq ft

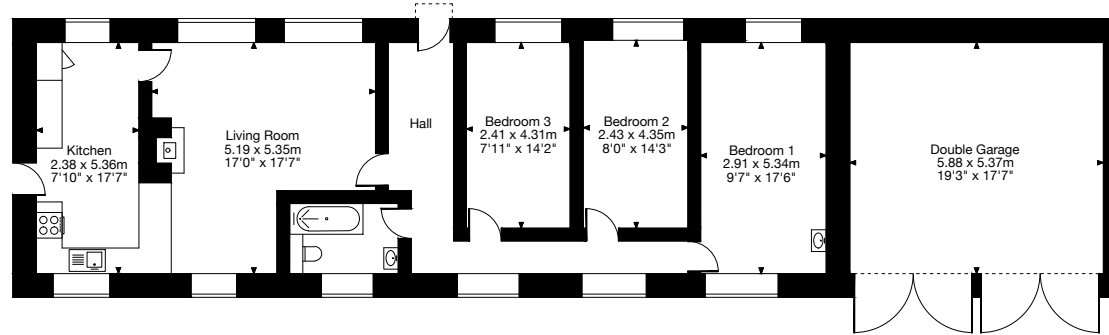
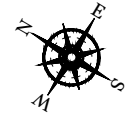
The Stable Cottage and Apartment = 190 sq m / 2,045 sq ft

The Clock House = 98 sq m / 1,054 sq ft

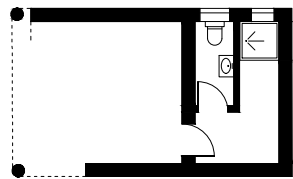
Garage = 31 sq m / 333 sq ft

Outbuildings = 219 sq m / 2,357 sq ft

Total Area = 1,269 sq m / 13,657 sq ft



The Clock House

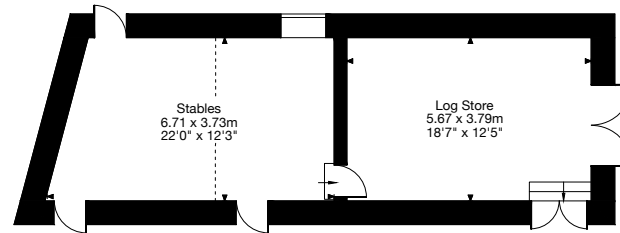


Ground Floor

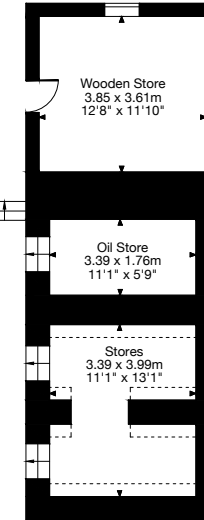


First Floor

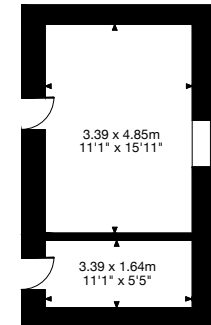
Pool House



Outbuilding

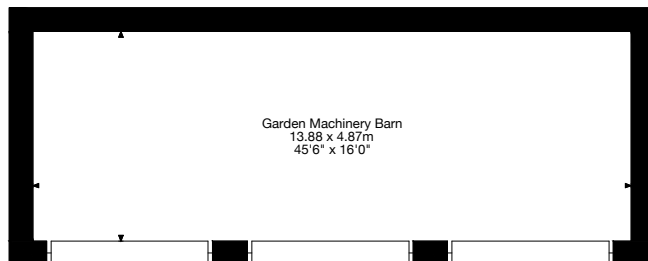


Ground Floor



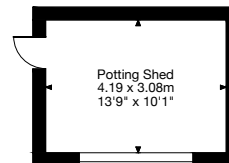
First Floor

The Granary



Garden Machinery Barn
13.88 x 4.87m
45'6" x 16'0"

Outbuilding



Potting Shed
4.19 x 3.08m
13'9" x 10'1"

Outbuilding

(Outbuildings not shown in actual location or orientation)