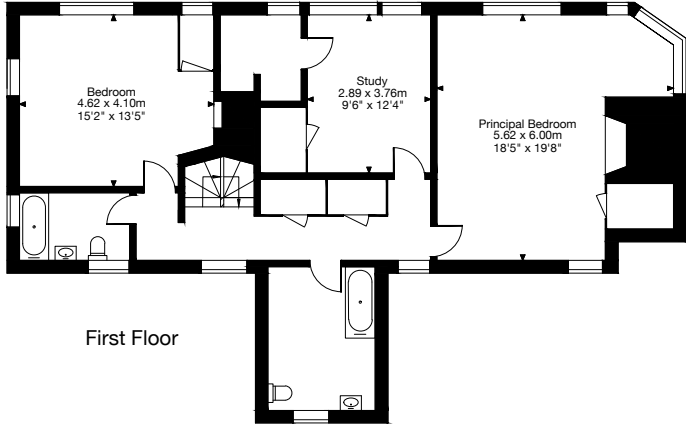


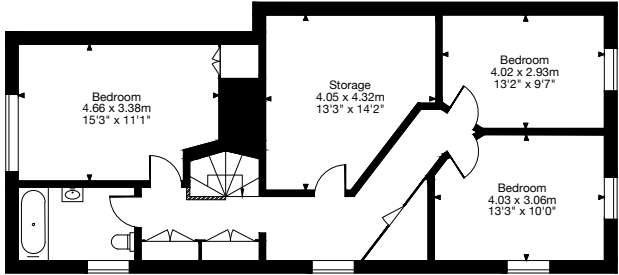
Britwell Priors, Longparish, Andover SP11 6QR

Gross Internal Area (Approx.)

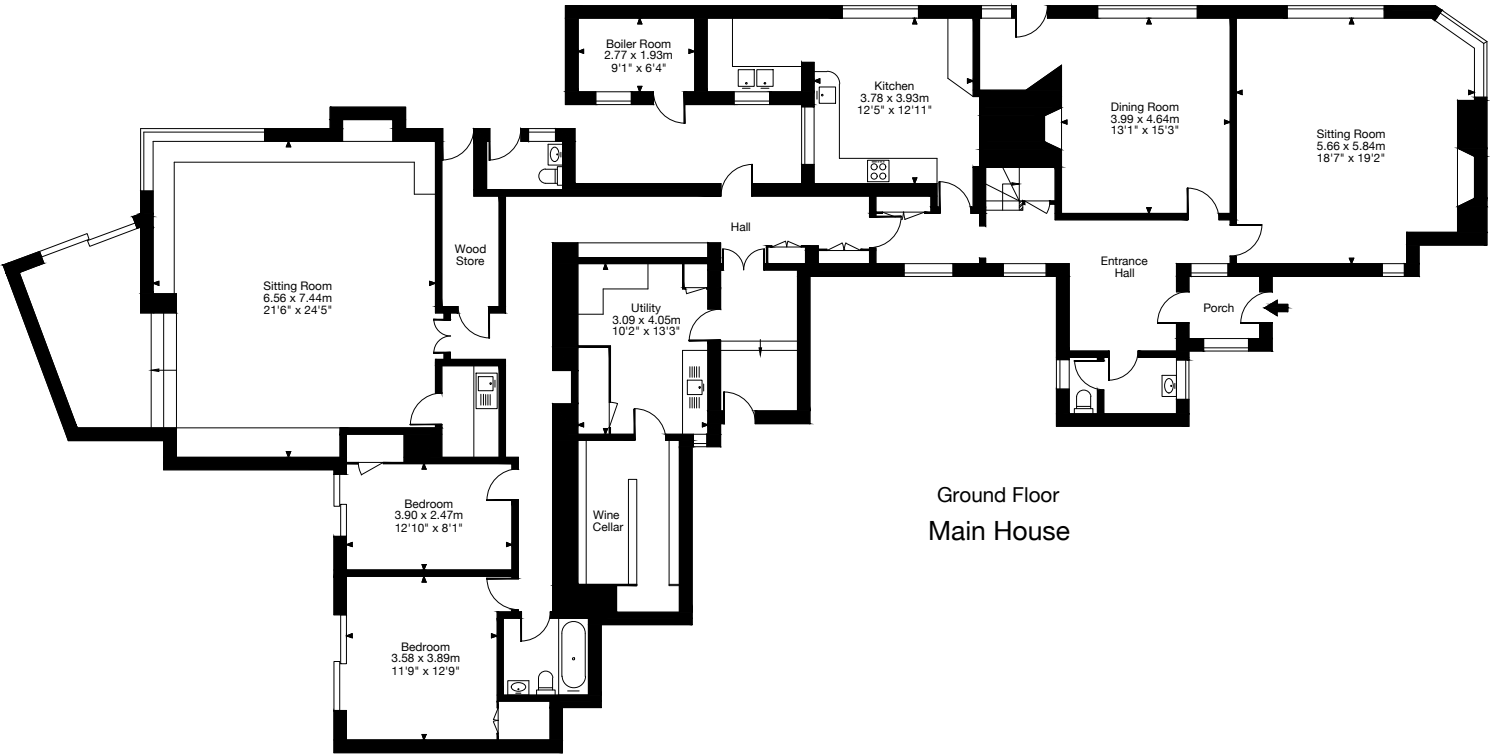
Main House = 452 sq m / 4,867 sq ft



First Floor



Second Floor



Ground Floor
Main House

Britwell Priors, Longparish, Andover SP11 6QR

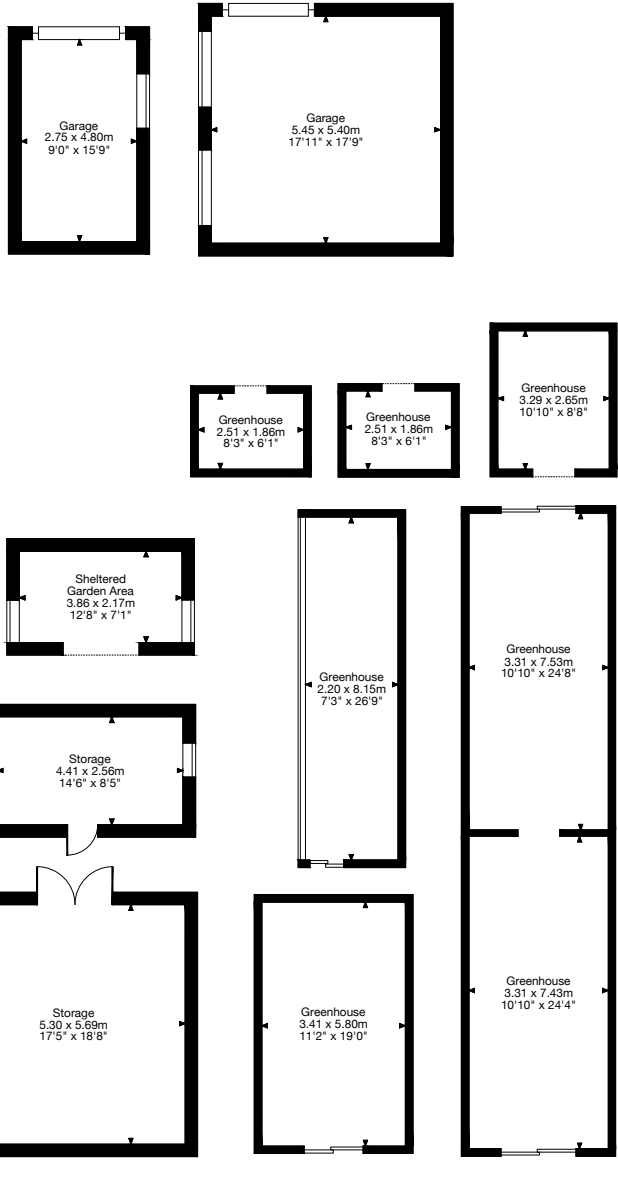
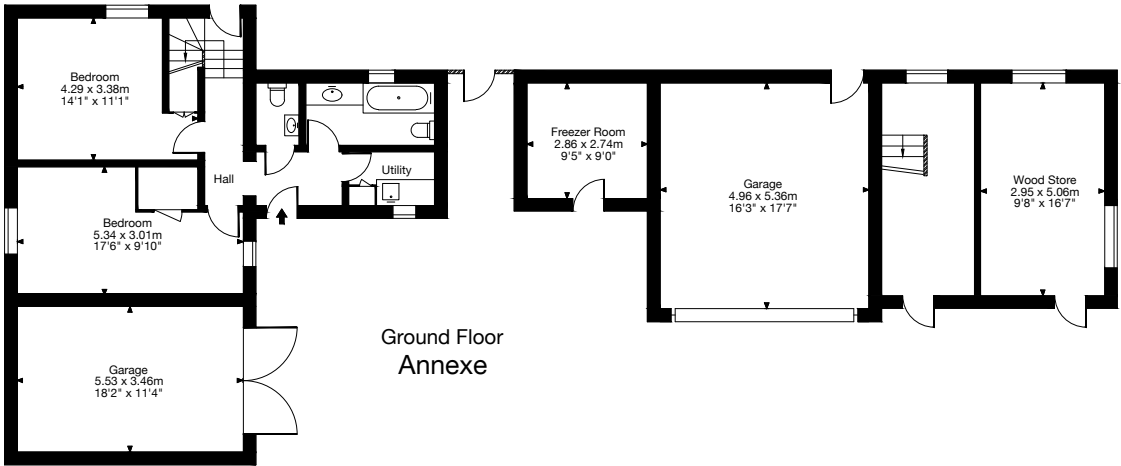
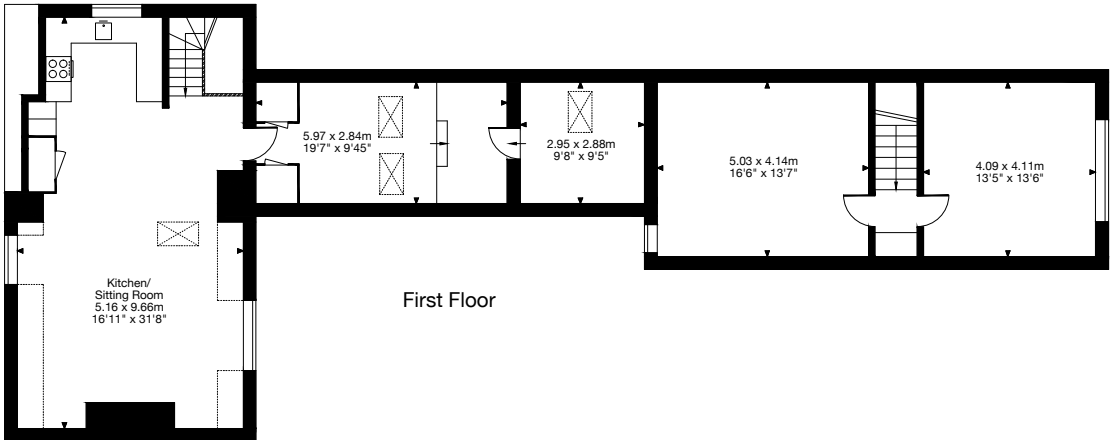
Gross Internal Area (Approx.)

Annexe = 243 sq m / 2,617 sq ft

(Incl. Annexe Outbuildings)

Outbuildings = 174 sq m / 1,872 sq ft

(Excl. Open Greenhouses/Sheltered Garden Area)



Outbuildings
(Not shown in actual location / orientation.)