

Firwood, 52 Somerford Road, Cirencester GL7 1TX

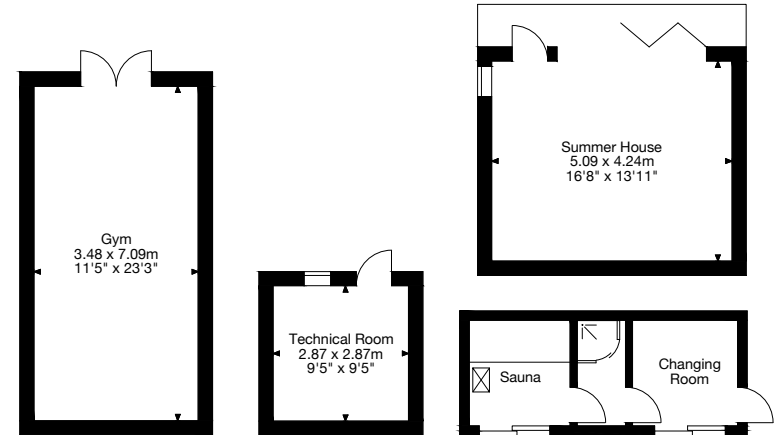
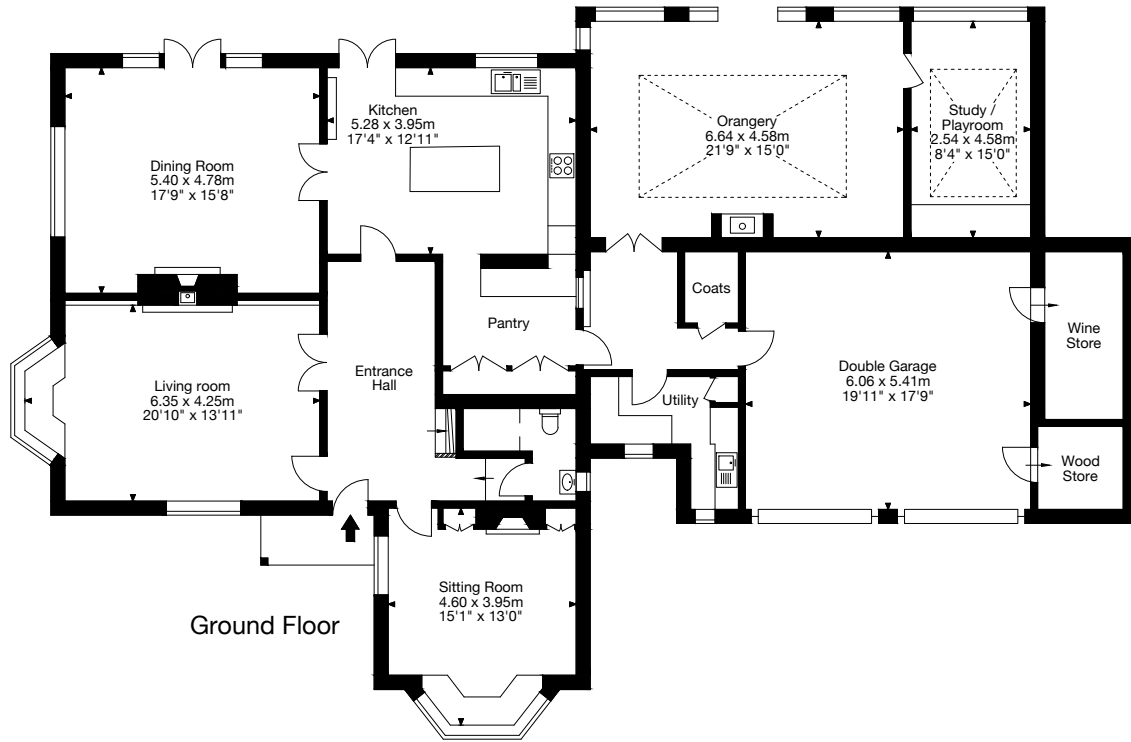
Gross Internal Area (Approx.)

Main House = 353 sq m / 3,800 sq ft

Garage = 44 sq m / 473 sq ft

Outbuildings = 66 sq m / 710 sq ft

Total Area = 463 sq m / 4,983 sq ft



Outbuildings  
(Not Shown in Actual Location / Orientation)