

## 2 The Mead, Cirencester, Gloucestershire GL7 2BB

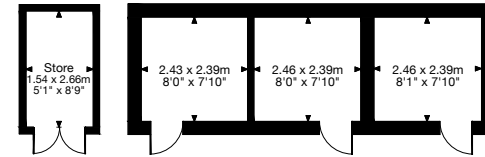
Gross Internal Area (Approx.)

Main House = 317 sq m / 3,412 sq ft

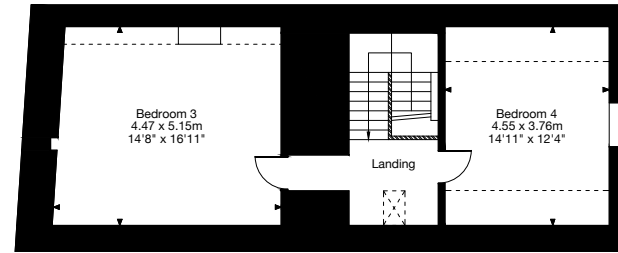
Studio = 39 sq m / 419 sq ft

Outbuildings = 22 sq m / 236 sq ft

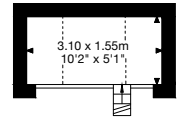
Total Area = 378 sq m / 4,067 sq ft



Outbuildings



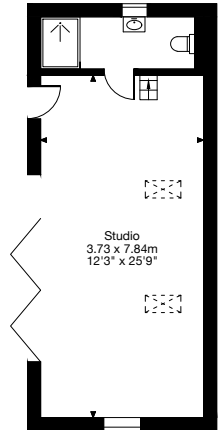
Second Floor



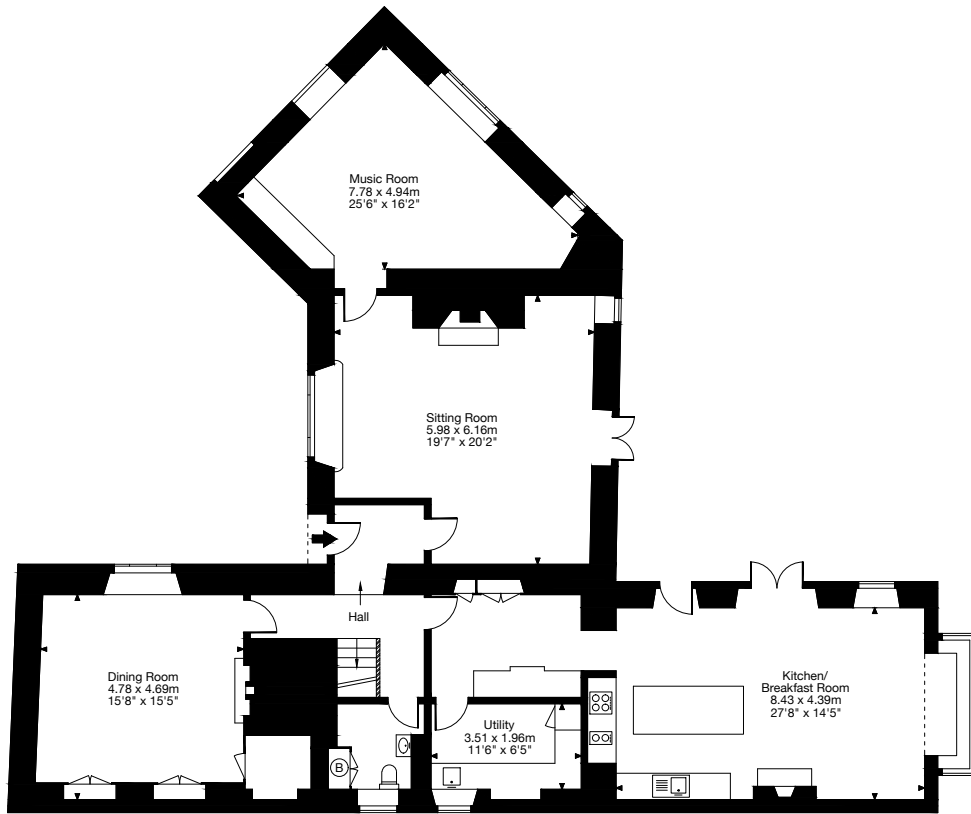
Mezzanine



First Floor



Studio



Ground Floor