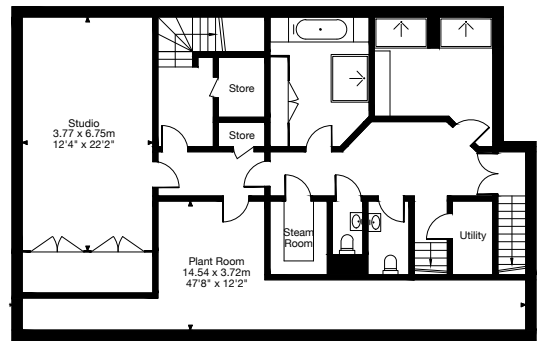
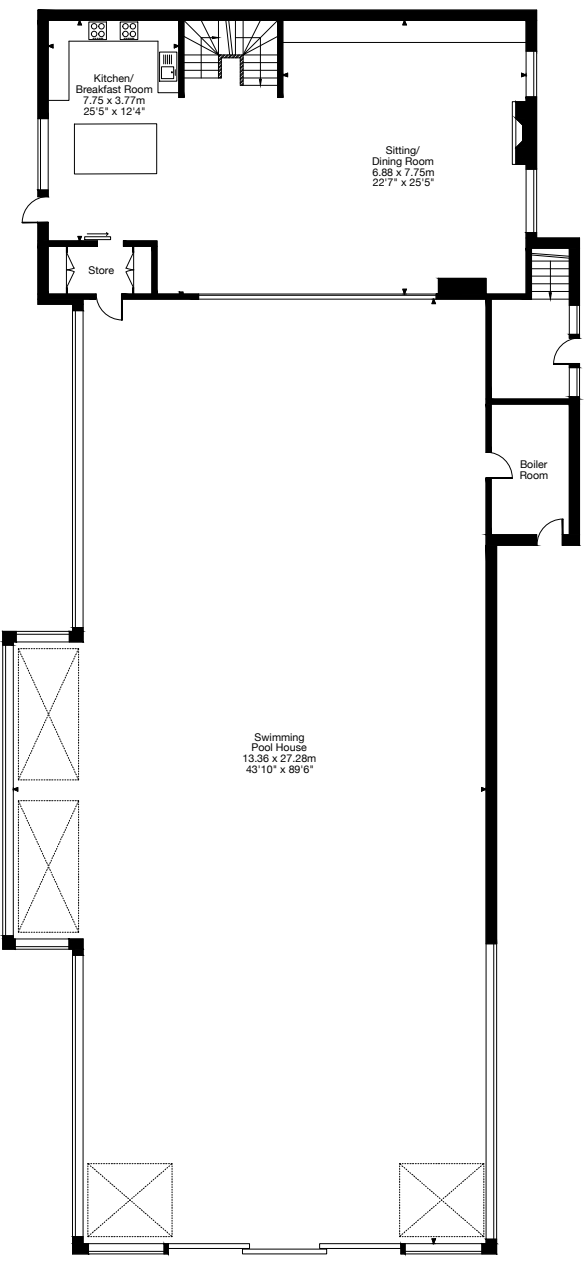




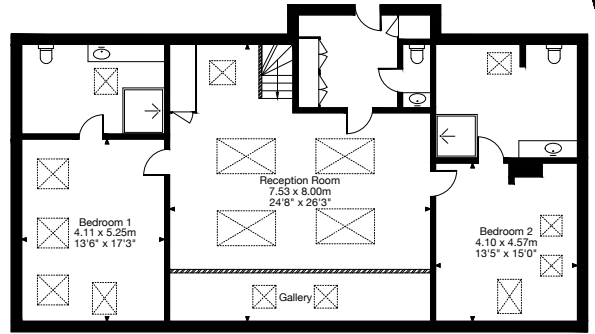
Redlap House, Redlap, Dartmouth, Devon TQ6 0JR
 Gross Internal Area (Approx.)
 Main House = 685 sq m / 7,371 sq ft
 Leisure Complex = 686 sq m / 7,388 sq ft
 Garage Block = 256 sq m / 2,758 sq ft
 Cabin = 38 sq m / 410 sq ft
 Outbuildings = 90 sq m / 965 sq ft
 Total Area = 1,755 sq m / 18,892 sq ft



Lower Ground Floor



Ground Floor
Leisure Complex



First Floor

Redlap House, Redlap, Dartmouth, Devon TQ6 0JR

Gross Internal Area (Approx.)

Main House = 685 sq m / 7,371 sq ft

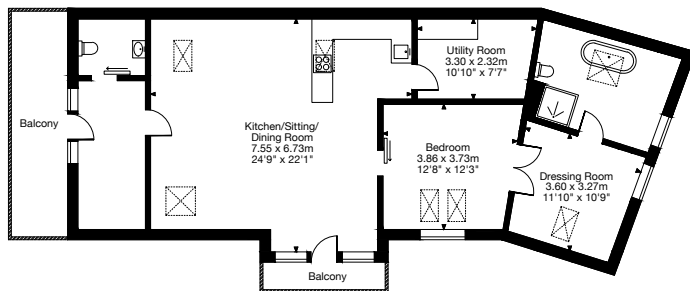
Leisure Complex = 686 sq m / 7,388 sq ft

Garage Block = 256 sq m / 2,758 sq ft

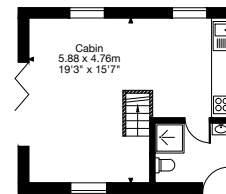
Cabin = 38 sq m / 410 sq ft

Outbuildings = 90 sq m / 965 sq ft

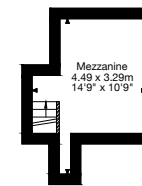
Total Area = 1,755 sq m / 18,892 sq ft



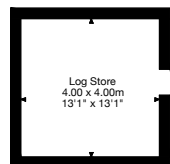
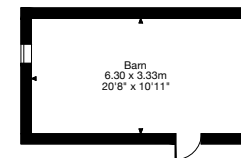
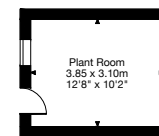
First Floor



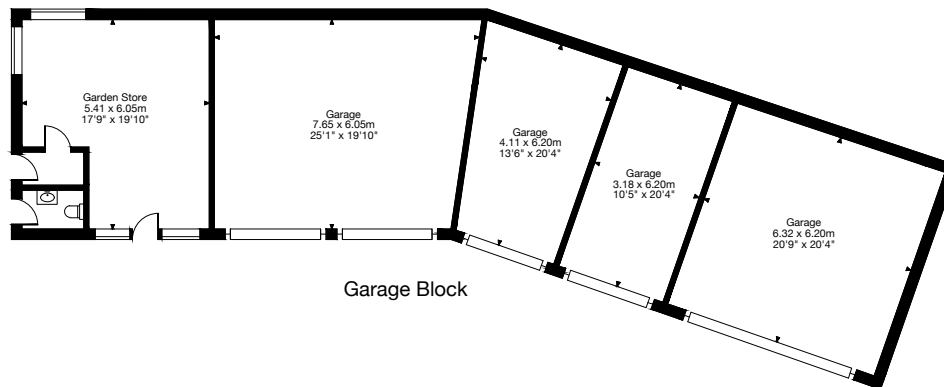
Ground Floor Cabin



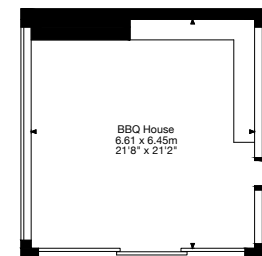
Mezzanine



Outbuilding



Garage Block



Outbuildings