

The Old Rectory, Beverston, Tetbury, Gloucestershire GL8 8TT

Gross Internal Area (Approx.)

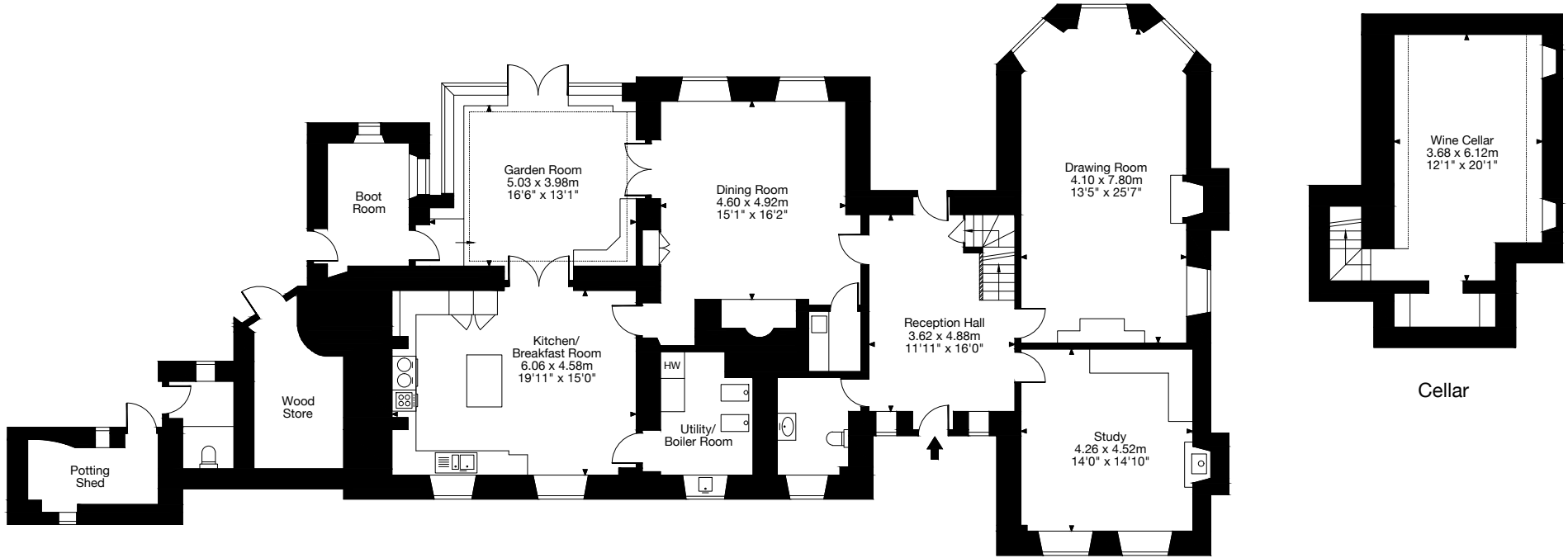
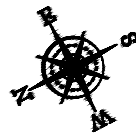
Main House = 483 sq m / 5,200 sq ft
(Incl. External Stores)

Garage = 54 sq m / 581 sq ft

Cottage = 116 sq m / 1,248 sq ft

Outbuildings = 68 sq m / 732 sq ft

Total Area = 721 sq m / 7,761 sq ft



External Stores

Main House

Ground Floor

Cellar

The Old Rectory, Beverston, Tetbury, Gloucestershire GL8 8TT

Gross Internal Area (Approx.)

Main House = 483 sq m / 5,200 sq ft

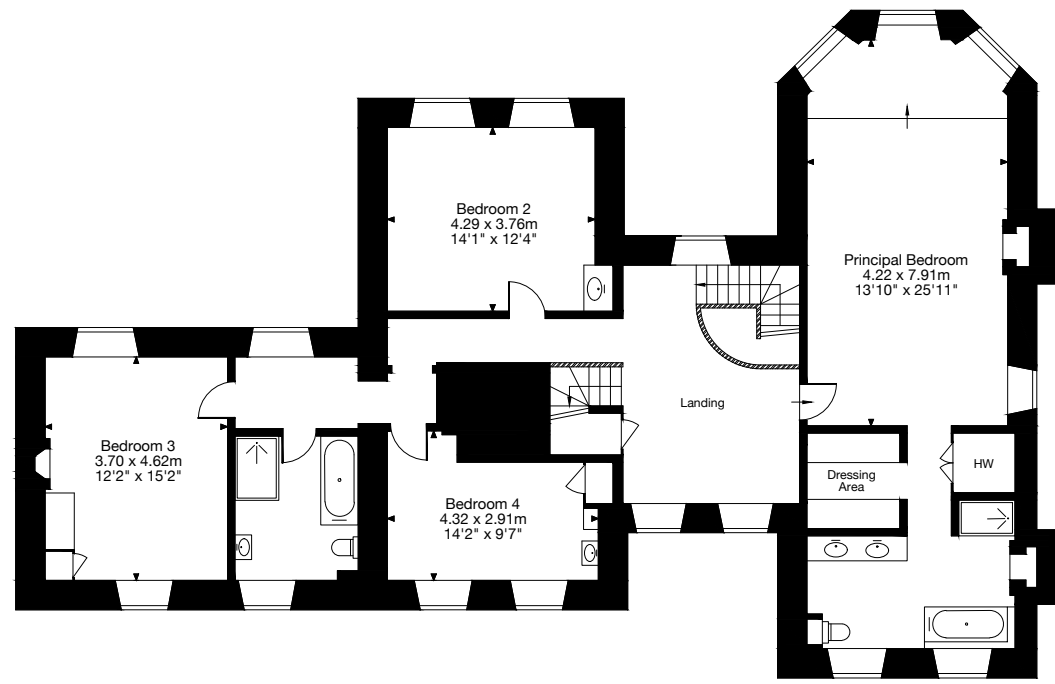
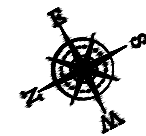
(Incl. External Stores)

Garage = 54 sq m / 581 sq ft

Cottage = 116 sq m / 1,248 sq ft

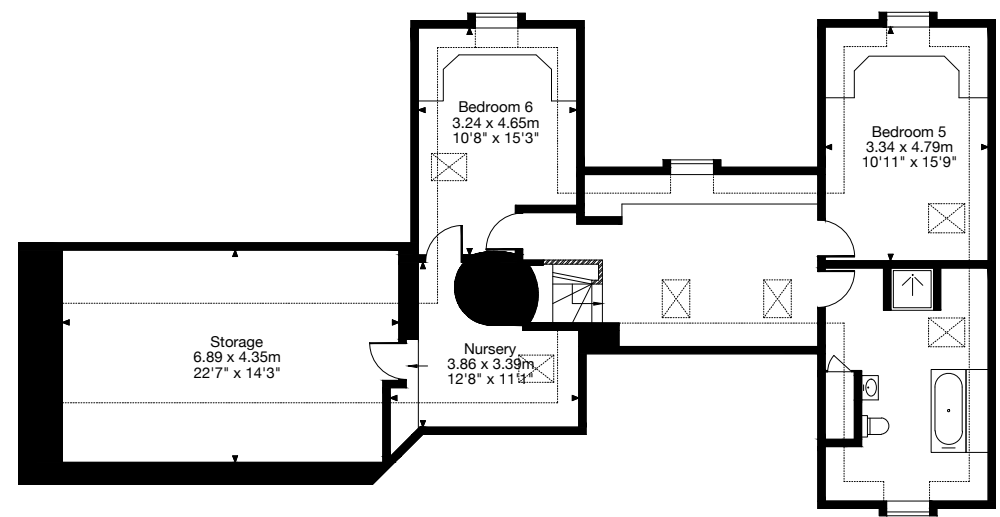
Outbuildings = 68 sq m / 732 sq ft

Total Area = 721 sq m / 7,761 sq ft



First Floor

Main House



Second Floor

The Old Rectory, Beverston, Tetbury, Gloucestershire GL8 8TT

Gross Internal Area (Approx.)

Main House = 483 sq m / 5,200 sq ft

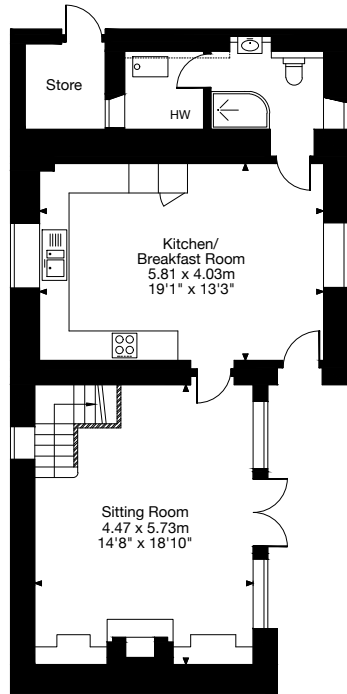
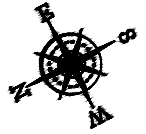
(Incl. External Stores)

Garage = 54 sq m / 581 sq ft

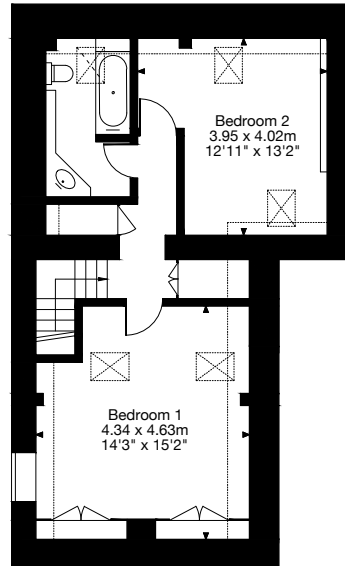
Cottage = 116 sq m / 1,248 sq ft

Outbuildings = 68 sq m / 732 sq ft

Total Area = 721 sq m / 7,761 sq ft

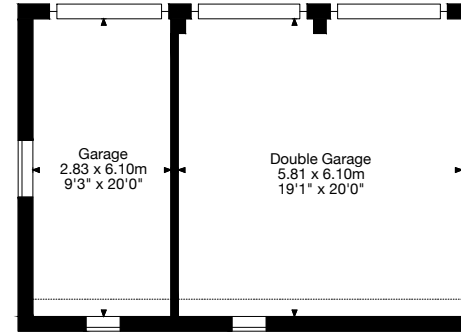


Ground Floor

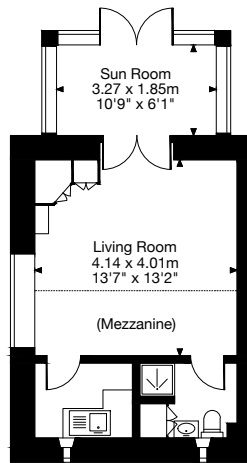


First Floor

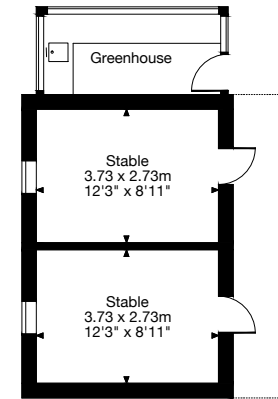
Cottage



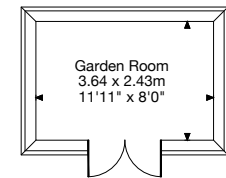
Garage



Bothy



Stables



Garden Room

Outbuildings

(Not shown in actual location or orientation.)