

The Old Rectory, Alton Pancras, Dorchester, Dorset DT2 7RT

Gross Internal Area (Approx.)

Main House = 382 sq m / 4,111 sq ft

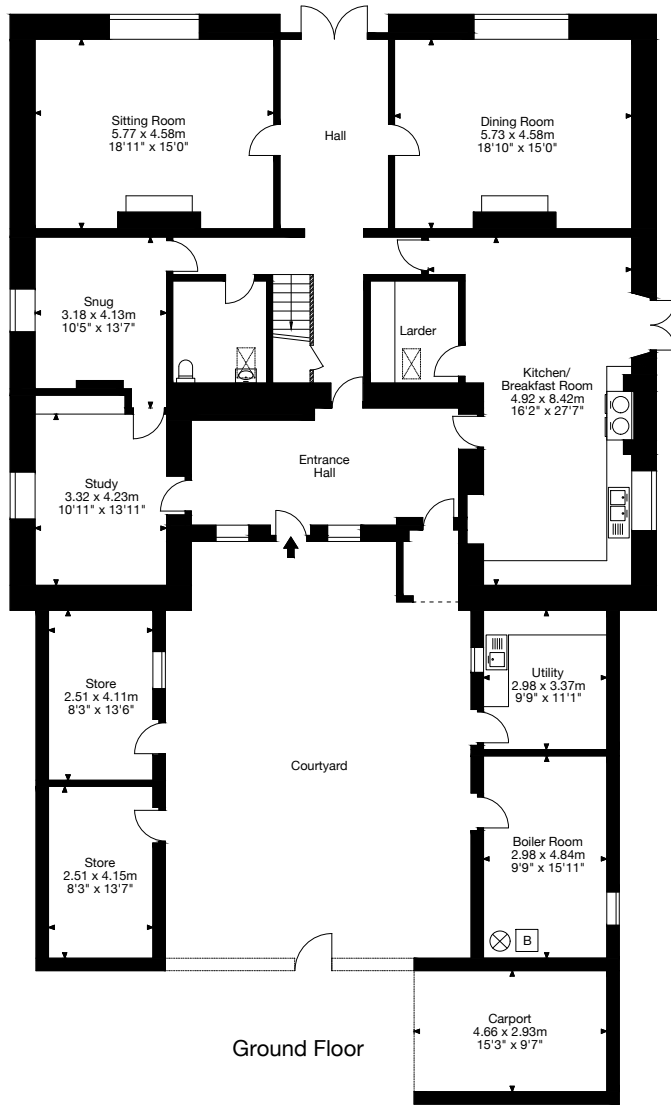
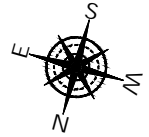
Garage = 21 sq m / 226 sq ft

Outbuilding = 99 sq m / 1,065 sq ft

Stables = 31 sq m / 333 sq ft

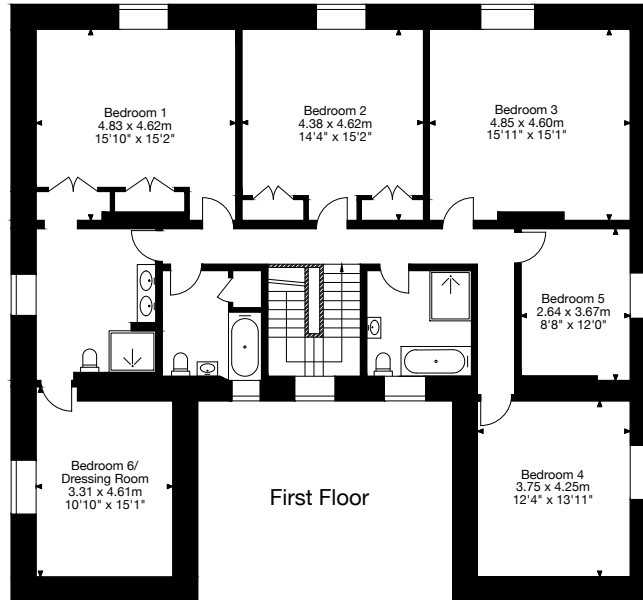
Carport = 13 sq m / 139 sq ft

Total Area = 546 sq m / 5,874 sq ft

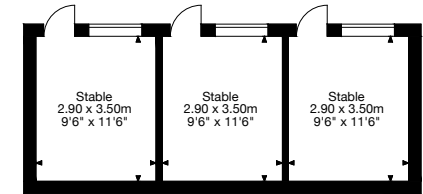


Ground Floor

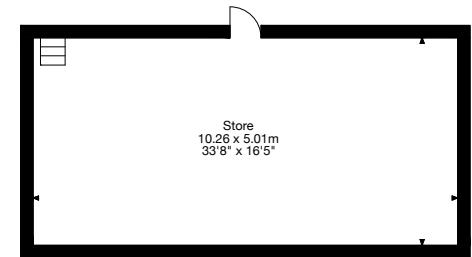
Carport



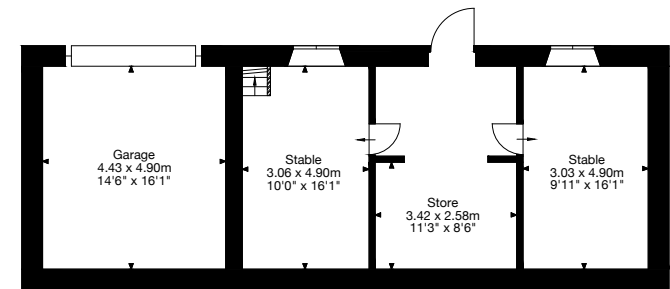
First Floor



Stables



Store (Above Outbuilding)



Garage

Outbuilding