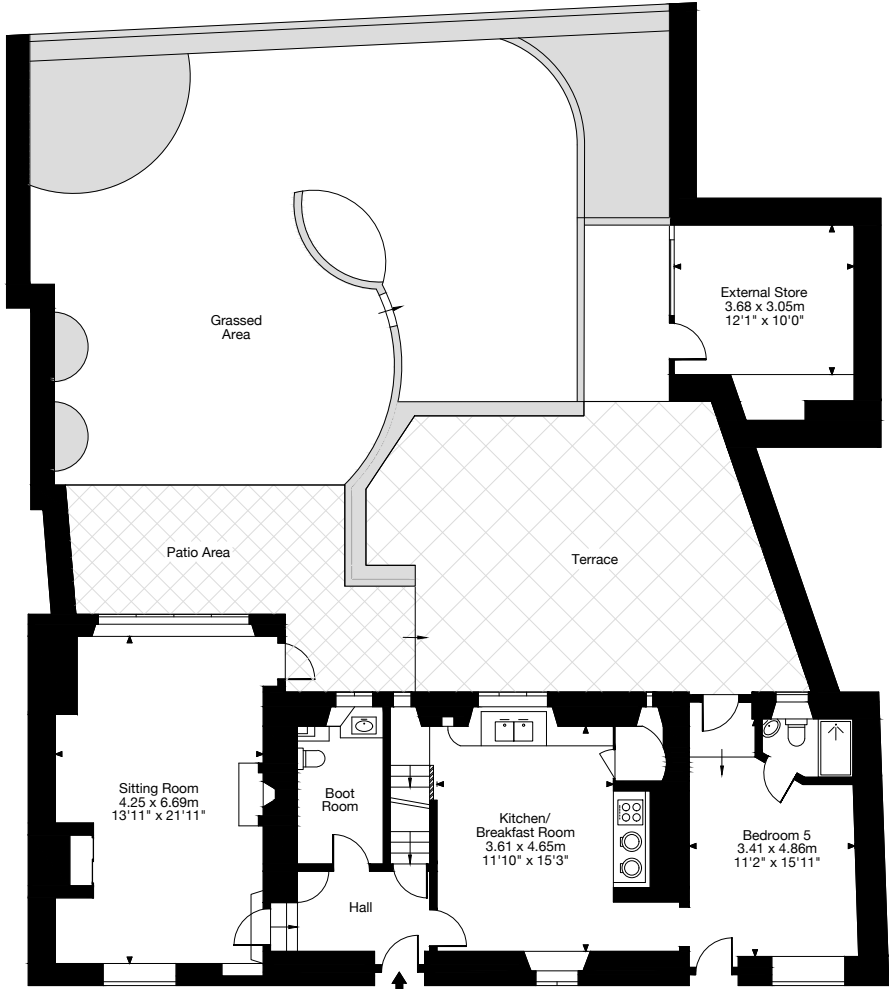
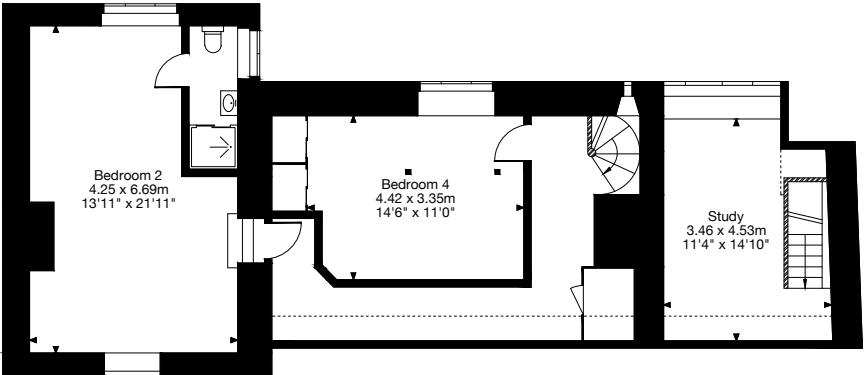


**Amesbury House, Vicarage Street, Painswick GL6 6XU**

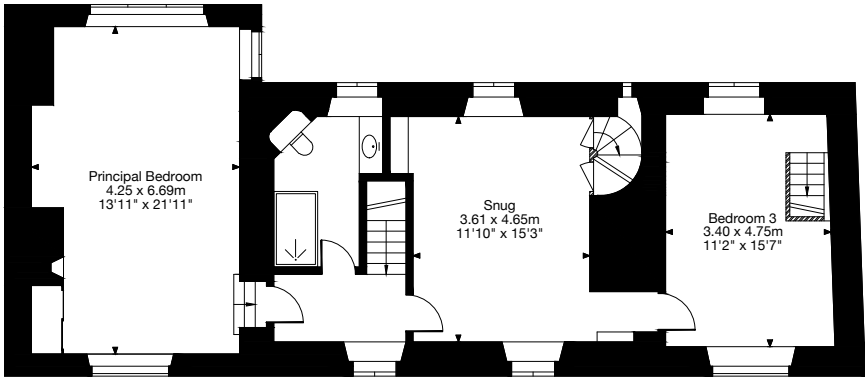
Gross Internal Area (Approx.)  
Main House = 269 sq m / 2,895 sq ft  
(Incl. Cellar and Restricted Height Areas)  
External Store = 11 sq m / 118 sq ft  
Total Area = 280 sq m / 3,013 sq ft



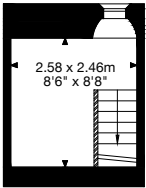
Ground Floor  
Main House



Second Floor



First Floor



Cellar