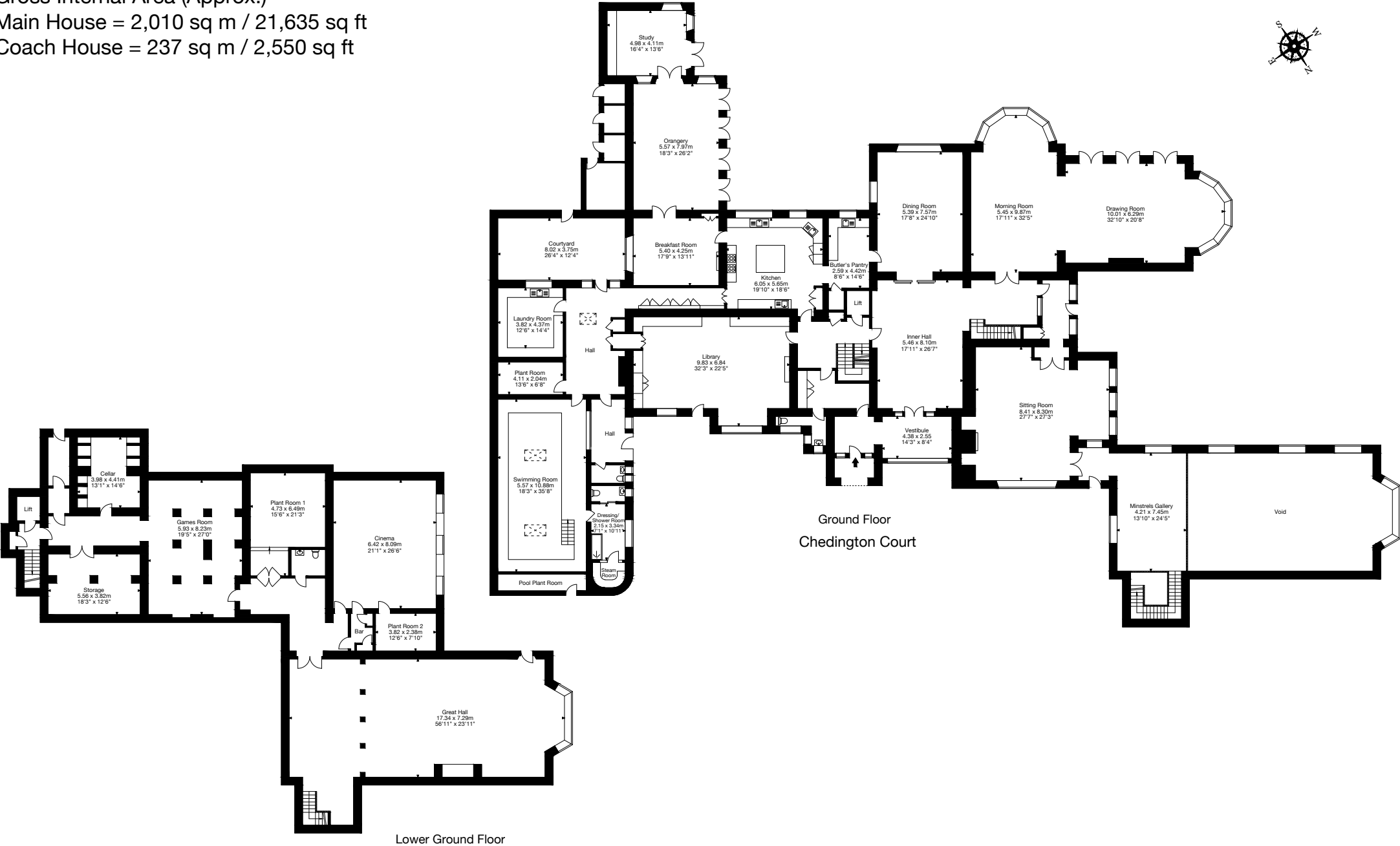


Chedington Court, Chedington, Beaminster DT8 3HY

Gross Internal Area (Approx.)

Main House = 2,010 sq m / 21,635 sq ft

Coach House = 237 sq m / 2,550 sq ft



Capture Property Marketing 2025. Drawn to RICS guidelines. Not drawn to scale. Plan is for illustration purposes only. All features, door openings, and window locations are approximate. All measurements and areas are approximate and should not be relied on as a statement of fact.

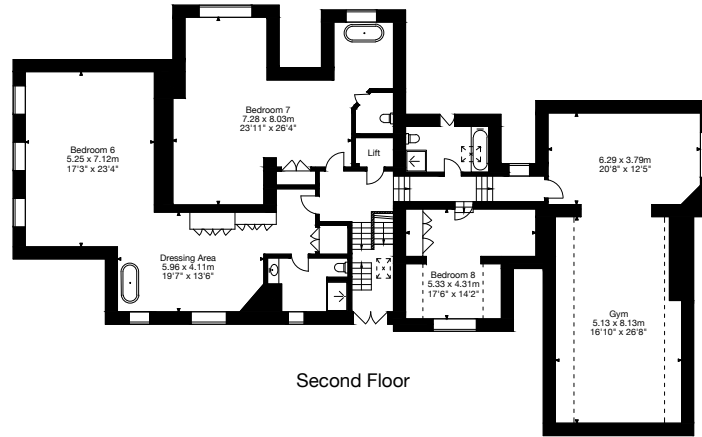


Chedington Court, Chedington, Beaminster DT8 3HY

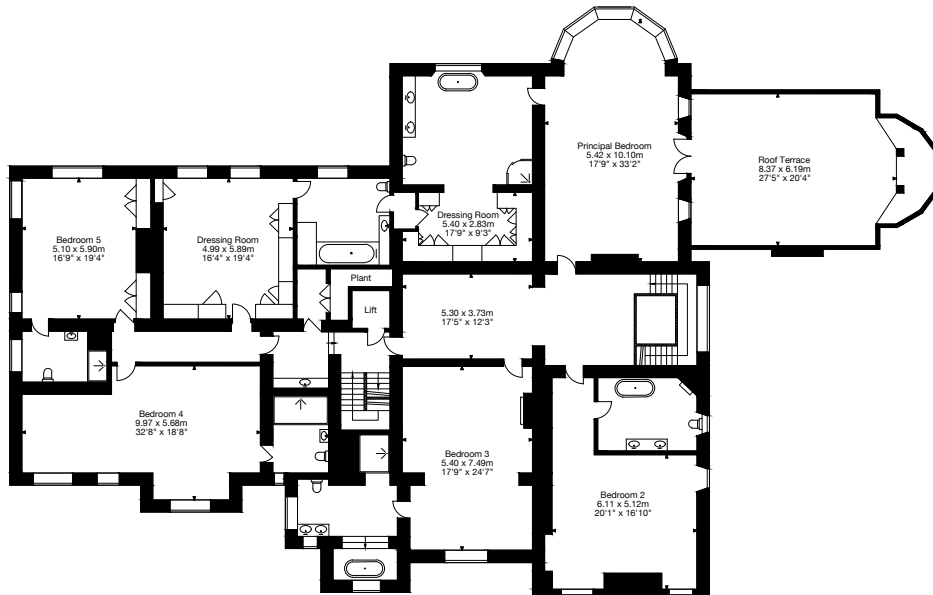
Gross Internal Area (Approx.)

Main House = 2,010 sq m / 21,635 sq ft

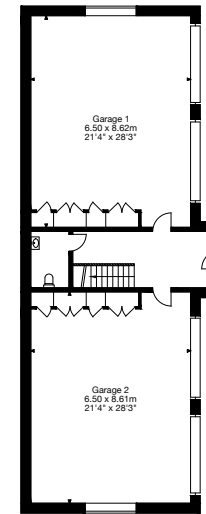
Coach House = 237 sq m / 2,550 sq ft



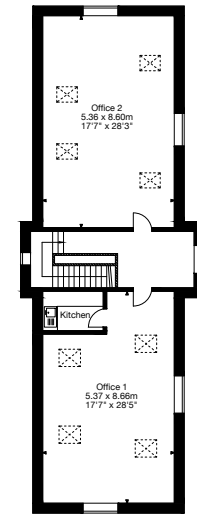
Second Floor



First Floor
Chedington Court



Ground Floor
Coach House



First Floor