

Burghfield House, Rissington Road, Bourton-On-The-Water, Cheltenham GL54 2AY

Gross Internal Area (Approx.)

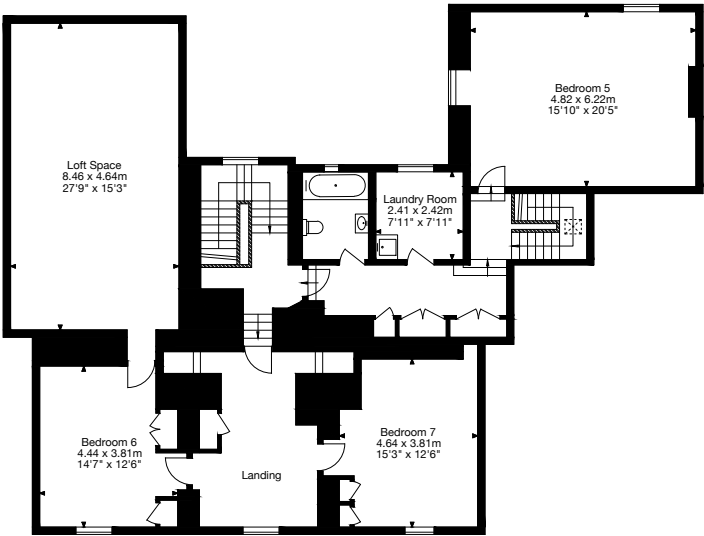
Main House = 675 sq m / 7,265 sq ft

Barn = 124 sq m / 1,334 sq ft

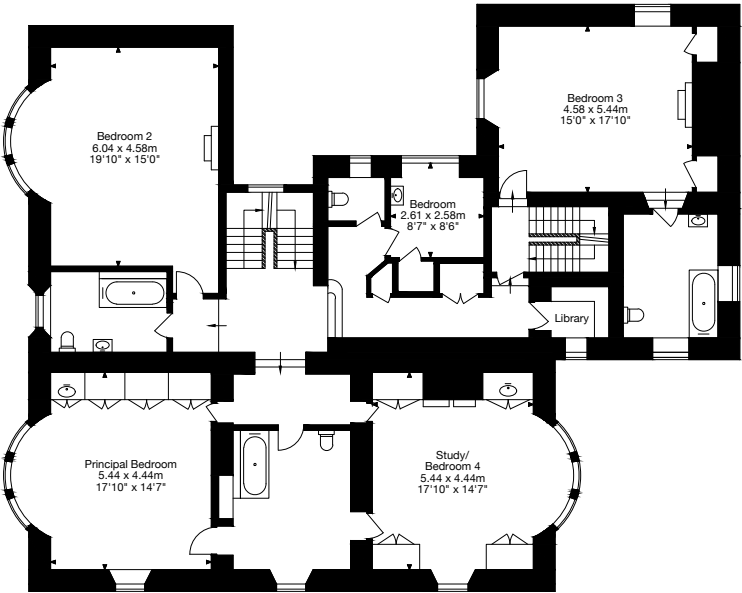
Outbuildings = 140 sq m / 1,506 sq ft

Total Area = 939 sq m / 10,105 sq ft

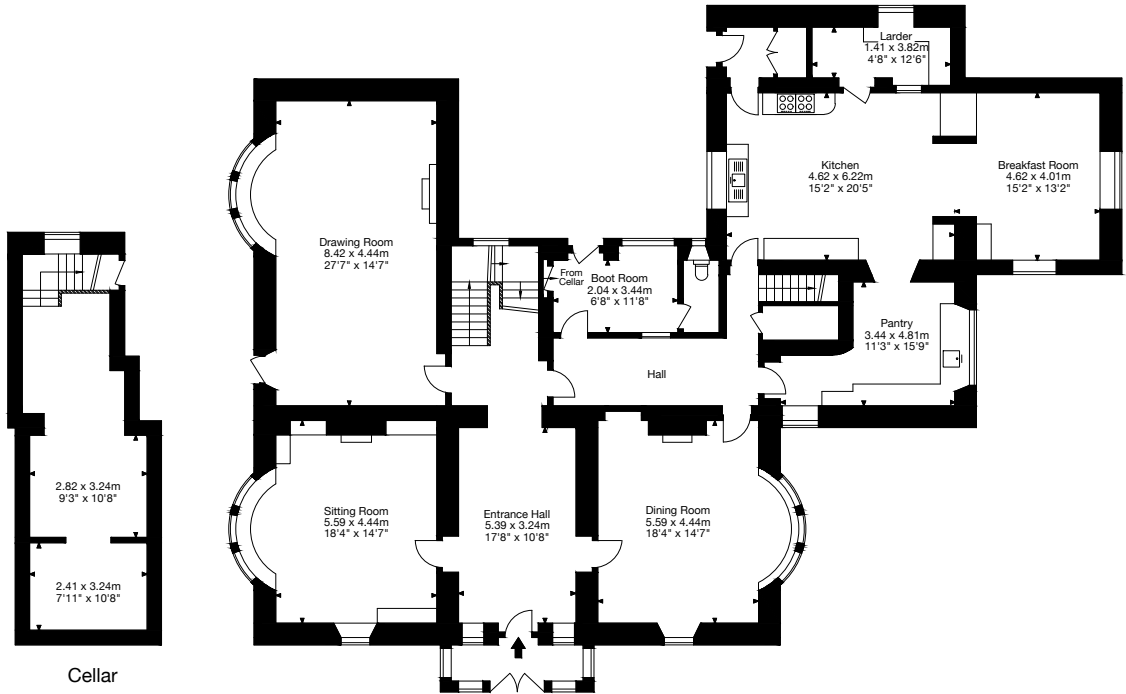
Outdoor Swimming Pool = 81 sq m / 871 sq ft



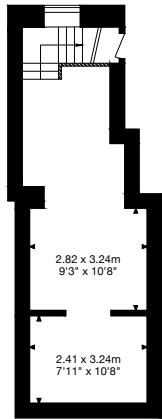
Second Floor



First Floor



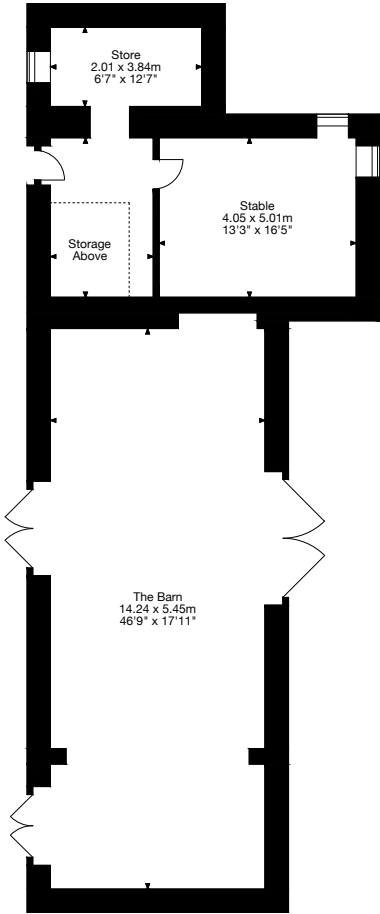
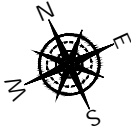
Ground Floor
Main House



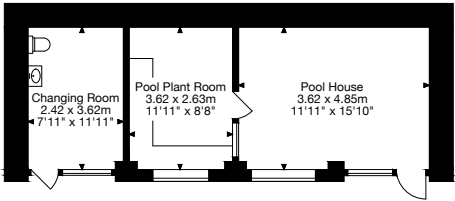
Cellar

Burghfield House, Rissington Road, Bourton-On-The-Water, Cheltenham GL54 2AY
Gross Internal Area (Approx.)
Main House = 675 sq m / 7,265 sq ft
Barn = 124 sq m / 1,334 sq ft
Outbuildings = 140 sq m / 1,506 sq ft
Total Area = 939 sq m / 10,105 sq ft

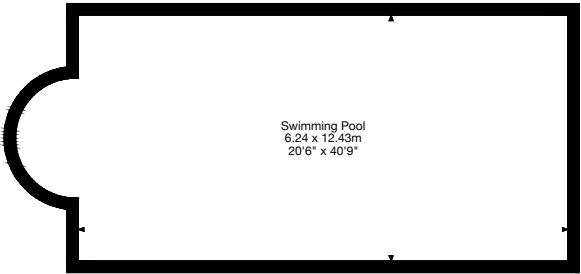
Outdoor Swimming Pool = 81 sq m / 871 sq ft



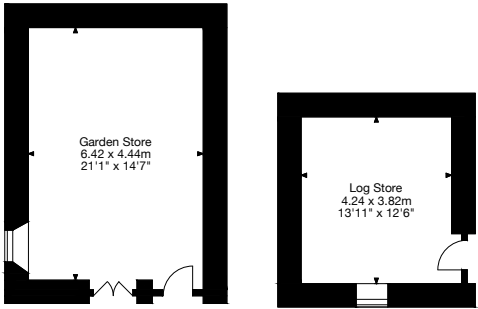
Barn



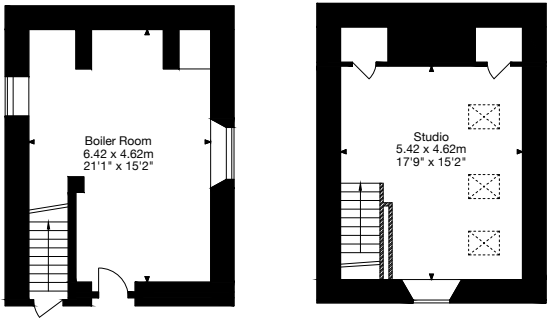
Pool House



Swimming Pool



Outbuildings



Ground Floor

First Floor

Outbuilding