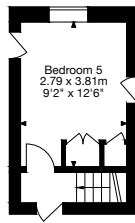


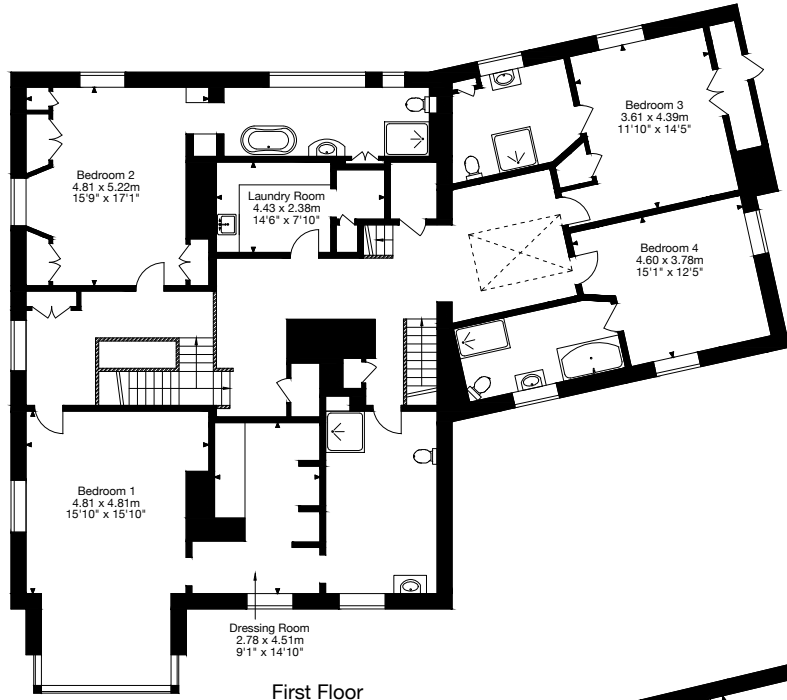
Wyke Green Farm, Froxfield, Petersfield GU32 1DZ  
 Gross Internal Area (Approx.)  
 Main House = 600 sq m / 6,458 sq ft  
 Nursery Cottage = 81 sq m / 871 sq ft  
 Dairy Cottage = 37 sq m / 398 sq ft  
 Stable = 33 sq m / 355 sq ft  
 Garage = 283 sq m / 3,046 sq ft  
 Outbuildings = 16 sq m / 172 sq ft  
 Total Area = 1050 sq m / 11,302 sq ft



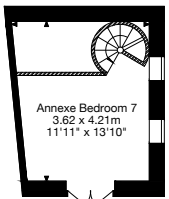
Outbuildings not shown  
 in actual location or orientation



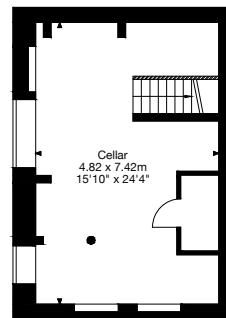
Second Floor



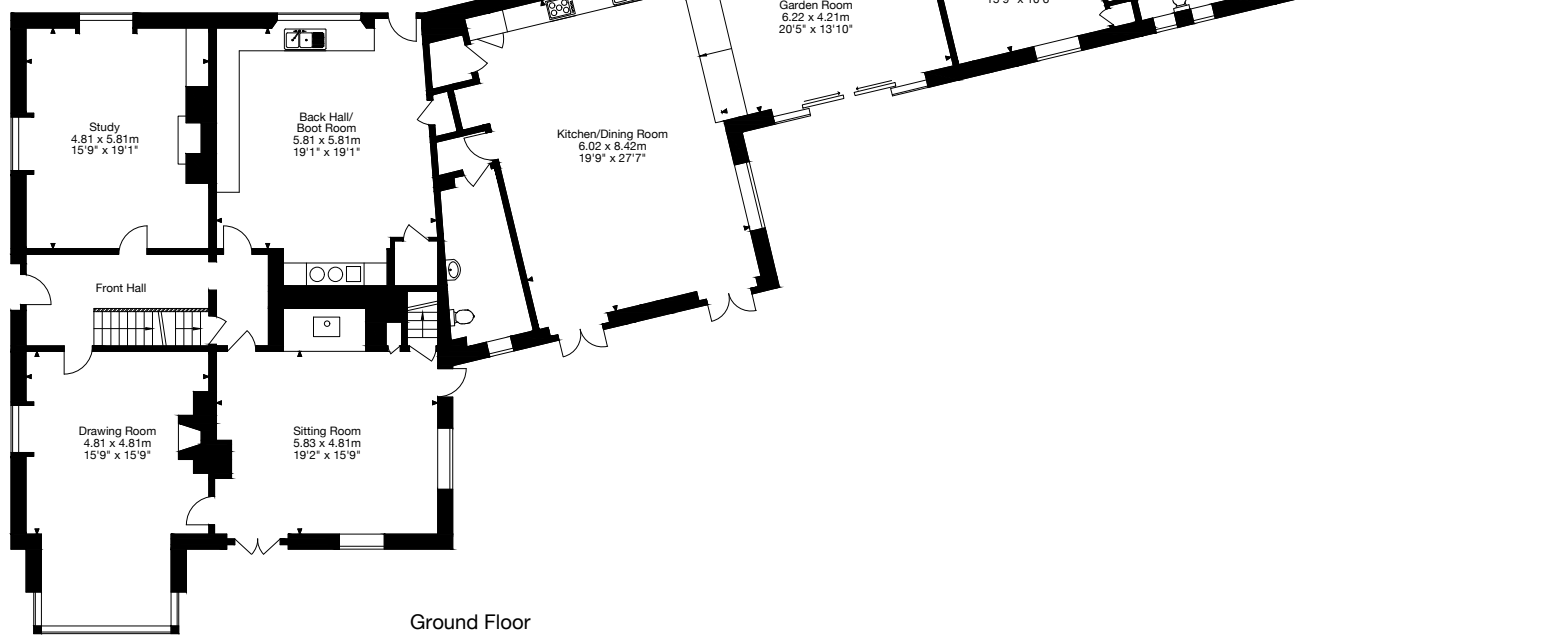
First Floor



Annexe First Floor



Cellar

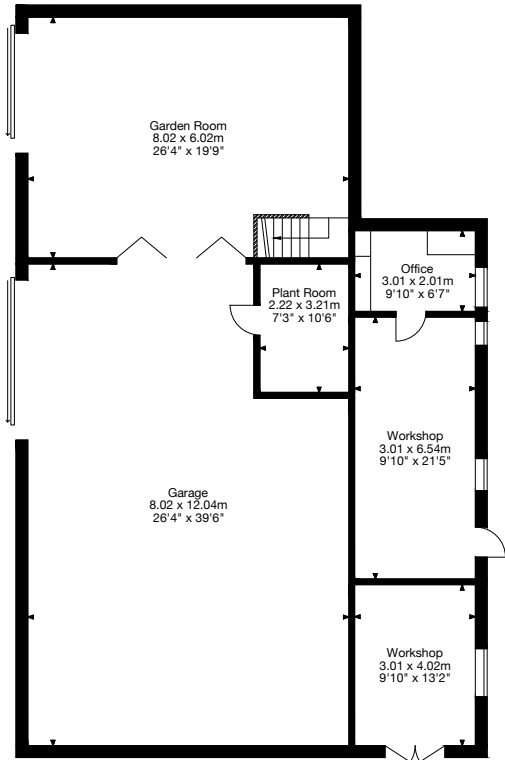


Ground Floor

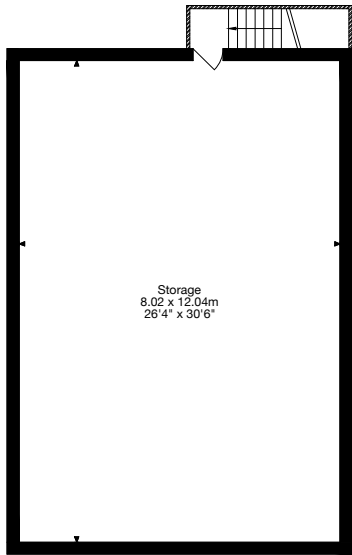
Capture Property Marketing 2024. Drawn to RICS guidelines. Not drawn to scale.  
 Plan is for illustration purposes only. All features, door openings, and window locations are approximate.  
 All measurements and areas are approximate and should not be relied on as a statement of fact.



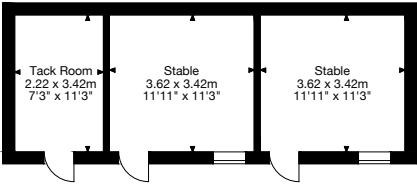
Wyke Green Farm, Froxfield, Petersfield GU32 1DZ  
Gross Internal Area (Approx.)  
Main House = 600 sq m / 6,458 sq ft  
Nursery Cottage = 81 sq m / 871 sq ft  
Dairy Cottage = 37 sq m / 398 sq ft  
Stable = 33 sq m / 355 sq ft  
Garage = 283 sq m / 3,046 sq ft  
Outbuildings = 16 sq m / 172 sq ft  
Total Area = 1050 sq m / 11,302 sq ft



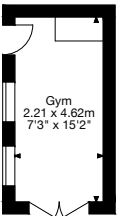
Garage Ground Floor



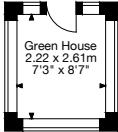
Garage First Floor



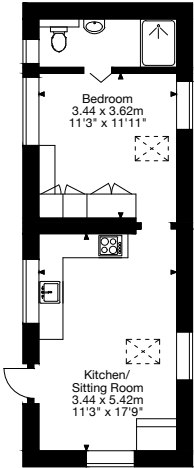
Stable



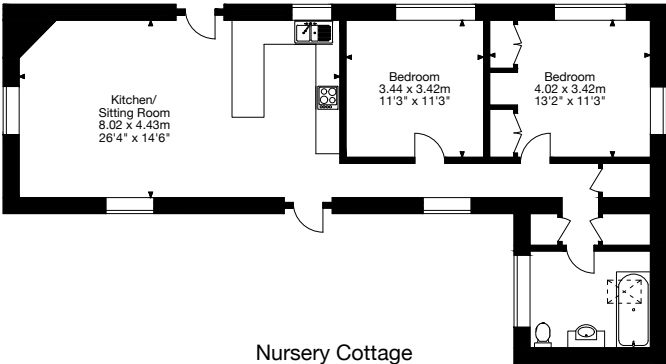
Outbuilding



Outbuilding



Dairy Cottage



Nursery Cottage

Outbuildings not shown  
in actual location or orientation