

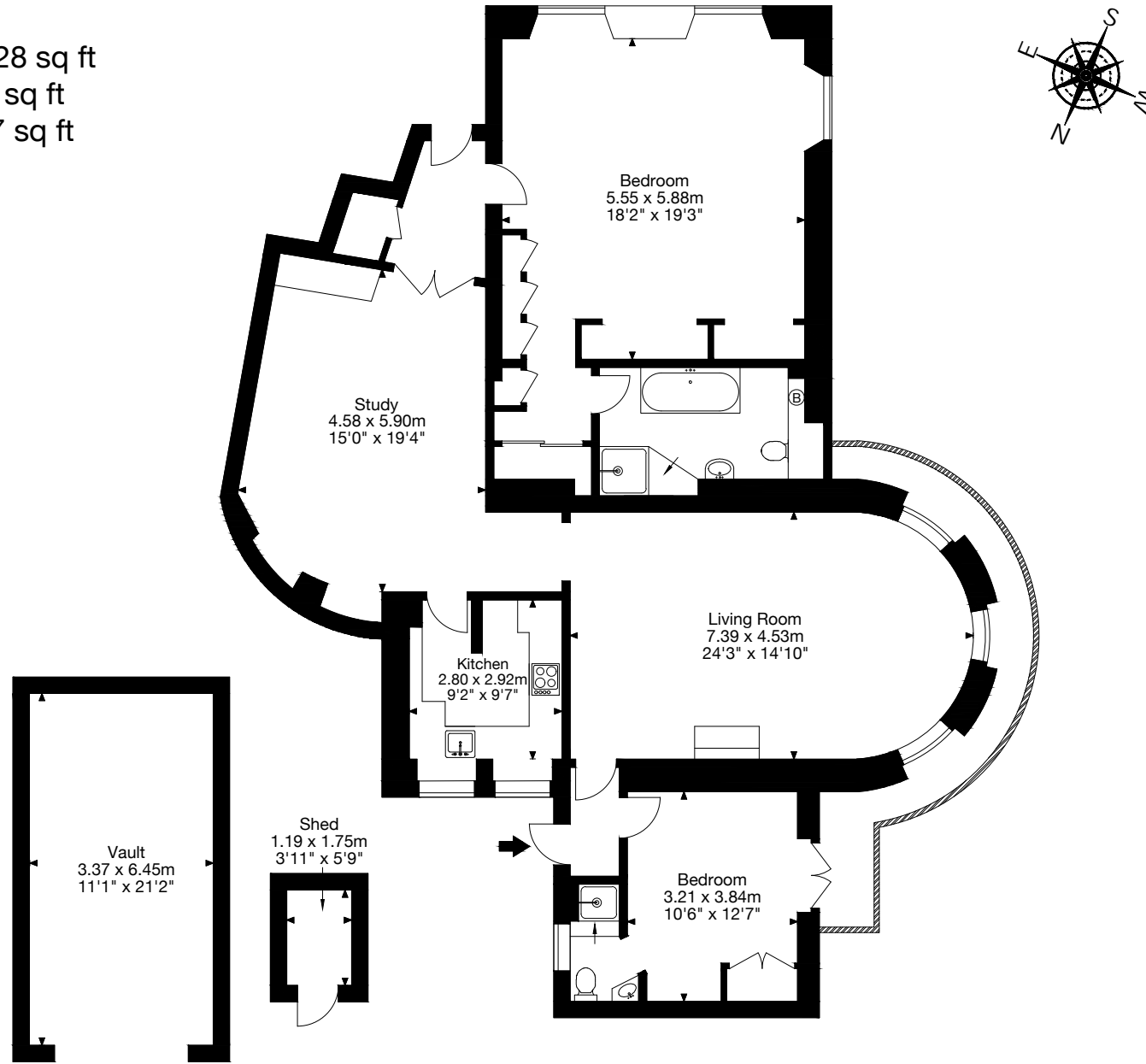
Ground Floor Flat, 9 Lansdown Place West, Bath BA1 5EZ

Gross Internal Area (Approx.)

Main House = 142 sq m / 1,528 sq ft

Outbuildings = 23 sq m / 256 sq ft

Total Area = 166 sq m / 1,797 sq ft



Outbuildings

Ground Floor

Capture Property Marketing 2024. Drawn to RICS guidelines. Not drawn to scale.
Plan is for illustration purposes only. All features, door openings, and window locations are approximate.
All measurements and areas are approximate and should not be relied on as a statement of fact.