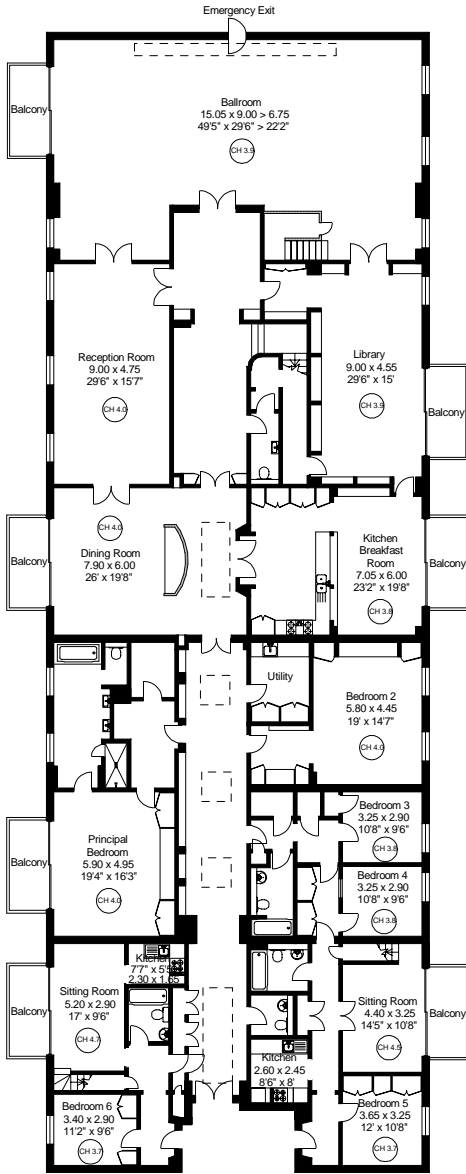
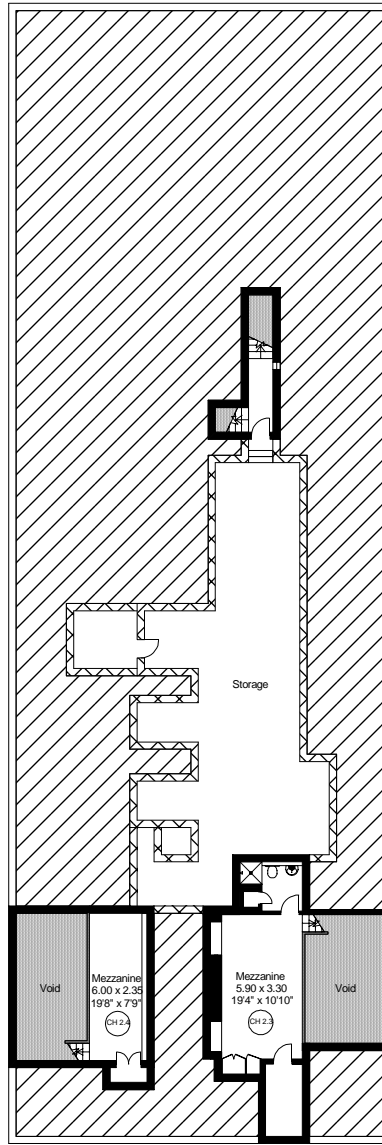


PIPER BUILDING
FULHAM
LONDON SW6

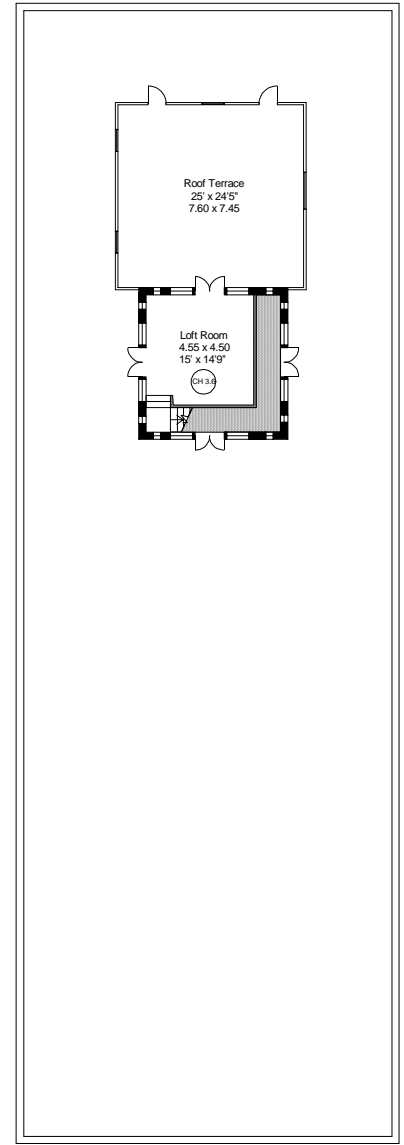
APPROXIMATE INTERNAL FLOOR (LIVING) AREA
 = 8105 SQ.FT / 753 SQ.M.
 APPROXIMATE ADDITIONAL AREAS
 = 1035 SQ.FT. / 96.1 SQ.M.
TOTAL AREAS SHOWN ON PLAN
 9140 SQ.FT. / 849.1 SQ.M.



Fifth Floor 7292 sq.ft.



Mezzanine Floor 170 + 363 + 47 = 580 sq.ft.



Sixth Floor 233 sq.ft.

COPYRIGHT:
 FLOORPLAN PRODUCED FOR "SKELLY" by www.floorplans.co.uk
 This plan is proportionally correct, but not to a given scale, and is for guidance only, and must not be relied upon as a statement of fact.
 All measurements and areas are approximate only, and have been prepared in accordance with the current edition of the BSI Code of Measuring Practice.
 Where a room has a sloping ceiling, the dotted line marks 1.5m height, and the measurements are shown at floor level.