

Old Vicarage, Wormleighton, Southam, CV47 2XG

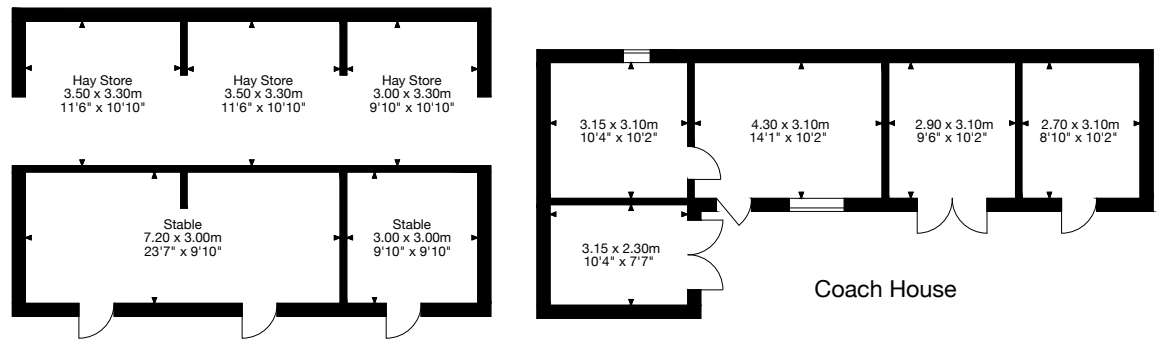
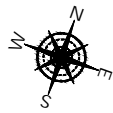
Gross Internal Area (Approx.)

Main House = 420 sq m / 4,520 sq ft

Stables = 67 sq m / 721 sq ft

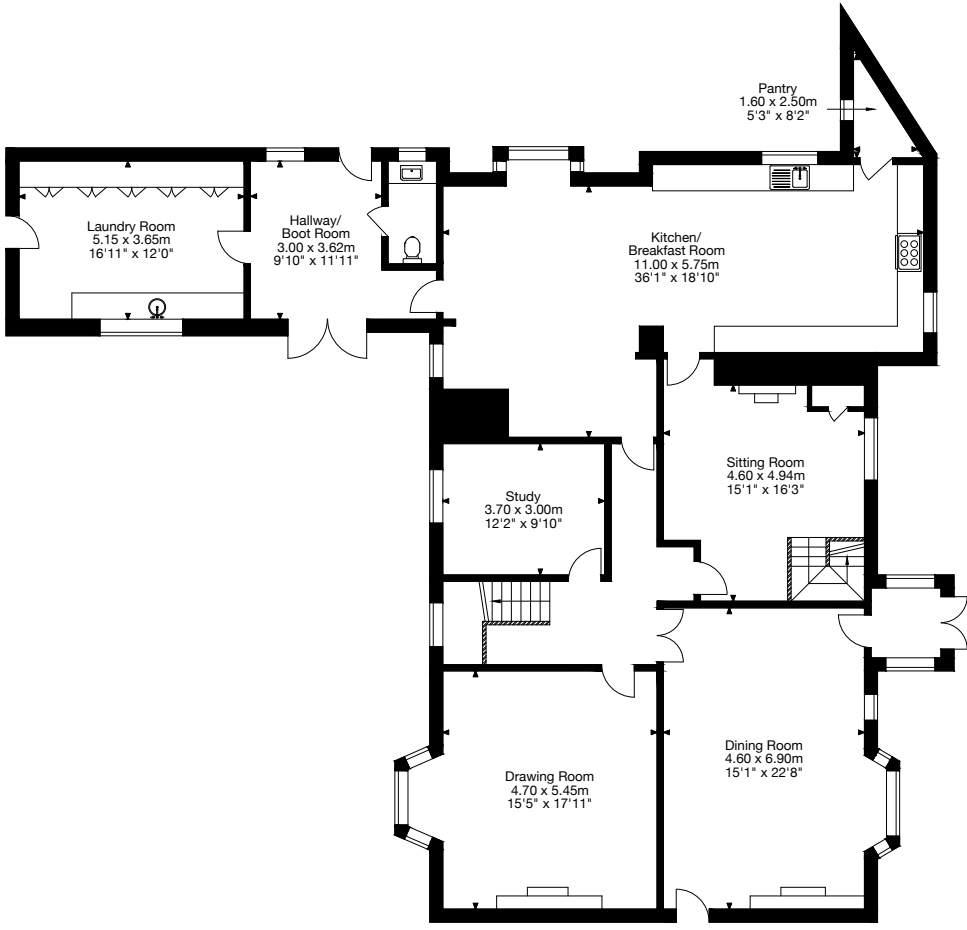
Coach House = 50 sq m / 538 sq ft

Total Area = 537 sq m / 5,779 sq ft

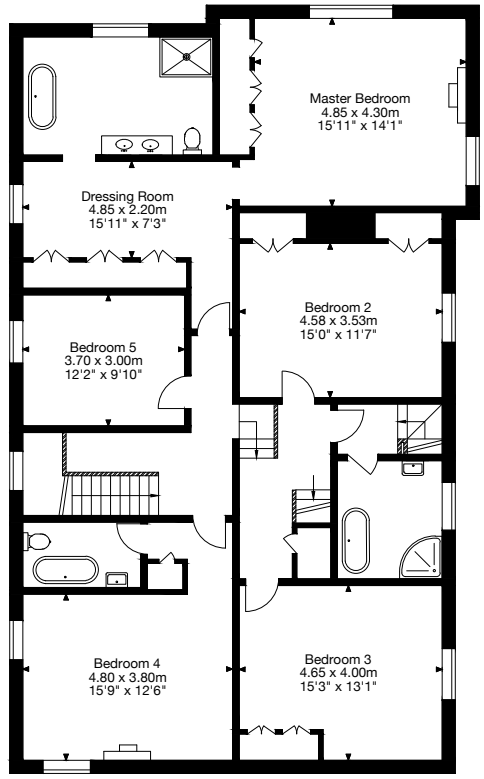


Stables

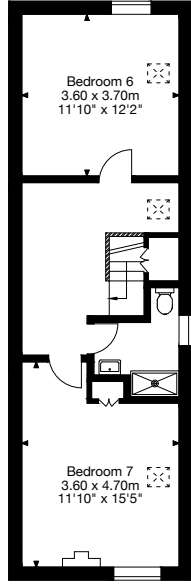
Coach House



Ground Floor



First Floor



Second Floor

Capture Property Marketing 2024. Drawn to RICS guidelines. Not drawn to scale. Plan is for illustration purposes only. All features, door openings, and window locations are approximate. All measurements and areas are approximate and should not be relied on as a statement of fact.

