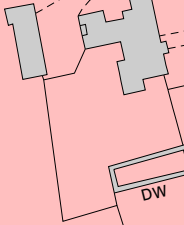
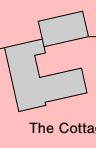


10.84 acres



Cattle Grid

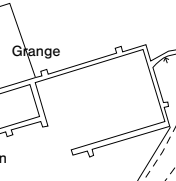


DW

3.9m

DW

5.2m



LB

Sinks

St Leonard's Farm

Cattle Grid

St Leonards Cottages

Issues

7.1m

**NOT TO SCALE**

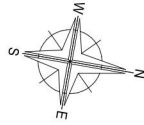


Note: This plan is for identification purposes only. It is believed to be correct but its accuracy is not guaranteed.  
© Crown copyright and database rights 2023 - OS 0100031673

Date: 09/05/2023 | Ref: DG-BBA007 | NOT TO SCALE

Produced by: Dunston Graphics Mapping Department  
Tel: 07891 759311 - www.dunstongraphics.co.uk

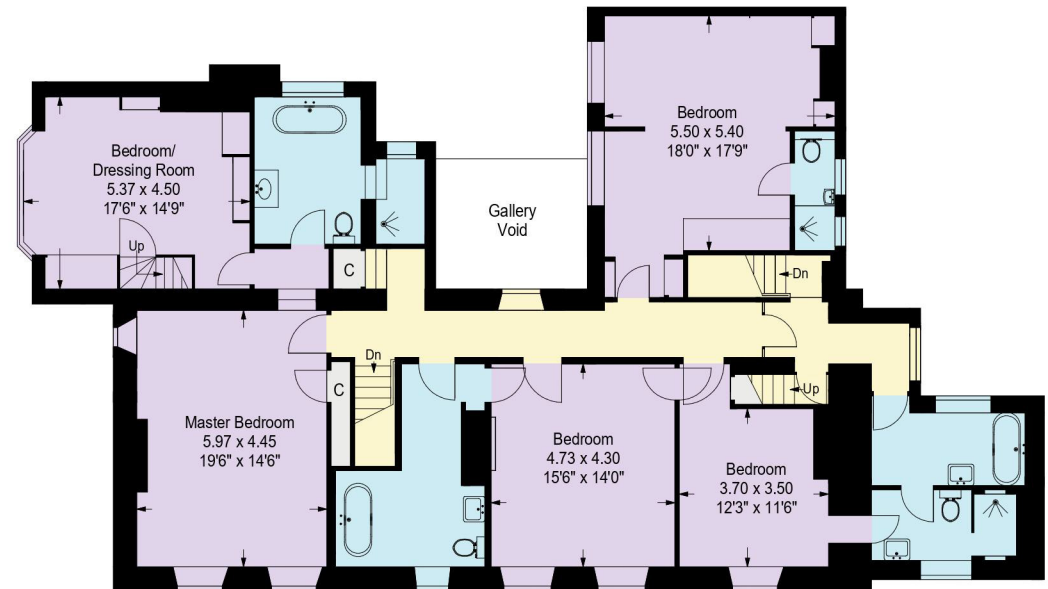
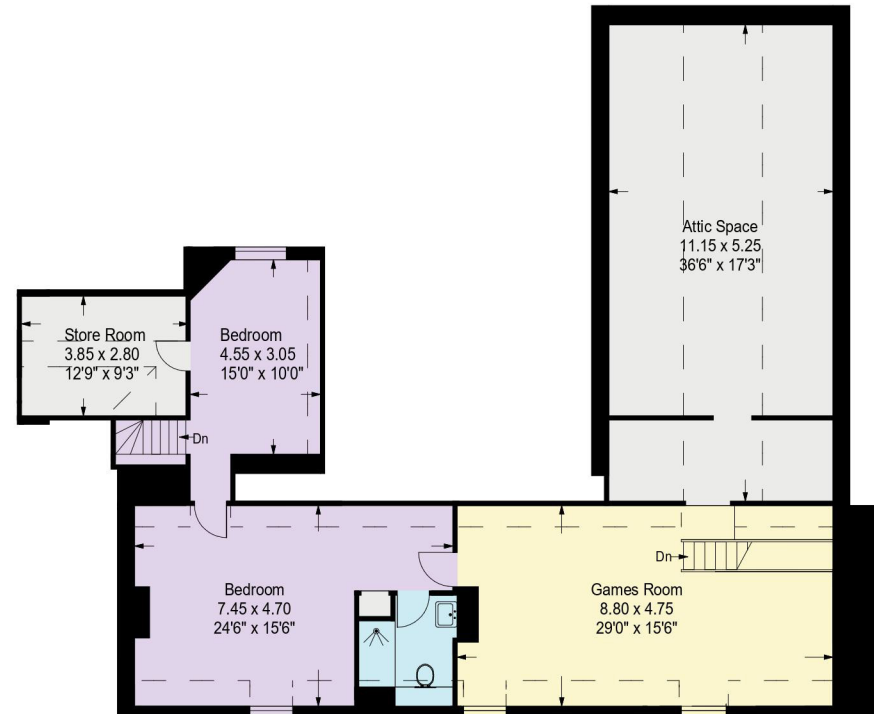
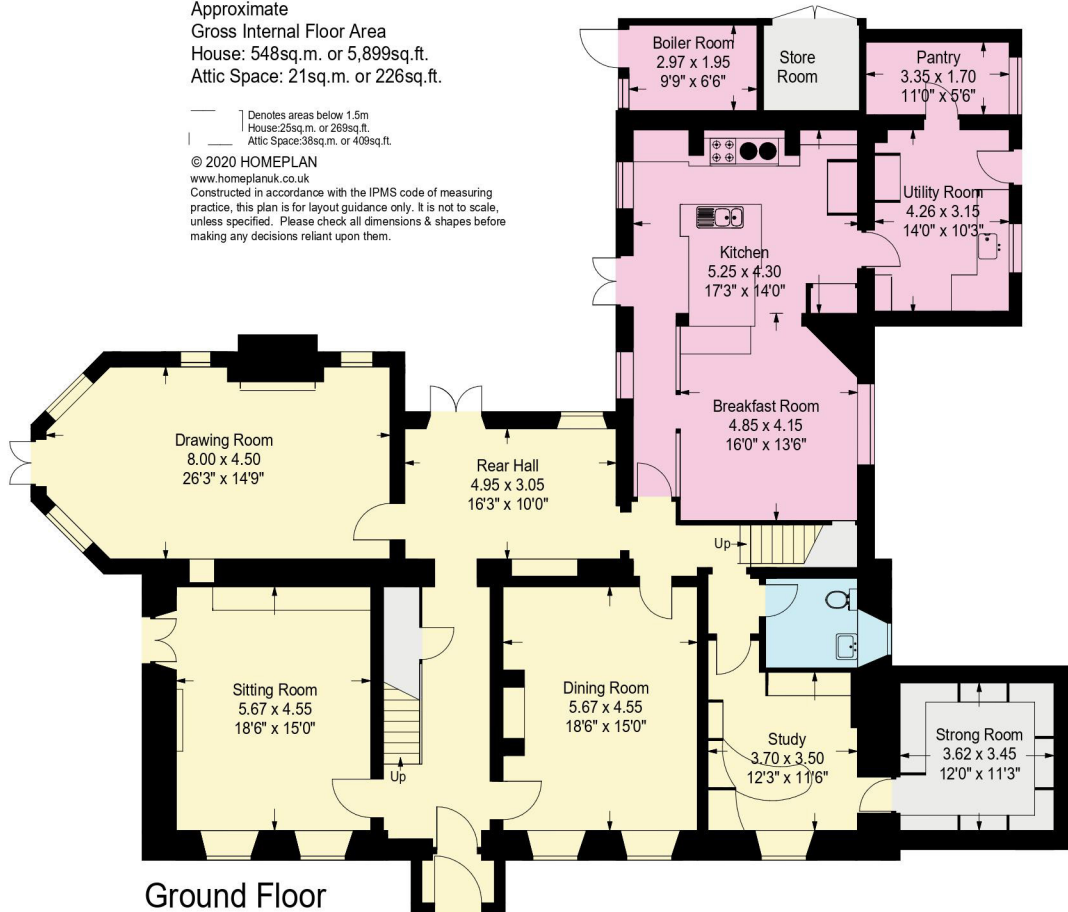
- Reception Rooms/General Circulation Areas
- Kitchen/Workshop/Utility/Plant
- Bedroom/Dressing Rooms
- Bathrooms
- Storage

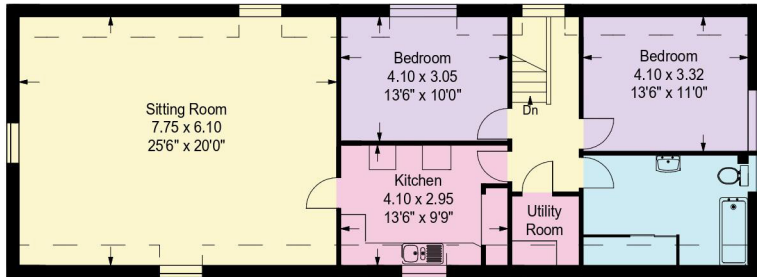


Approximate  
Gross Internal Floor Area  
House: 548sq.m. or 5,899sq.ft.  
Attic Space: 21sq.m. or 226sq.ft.

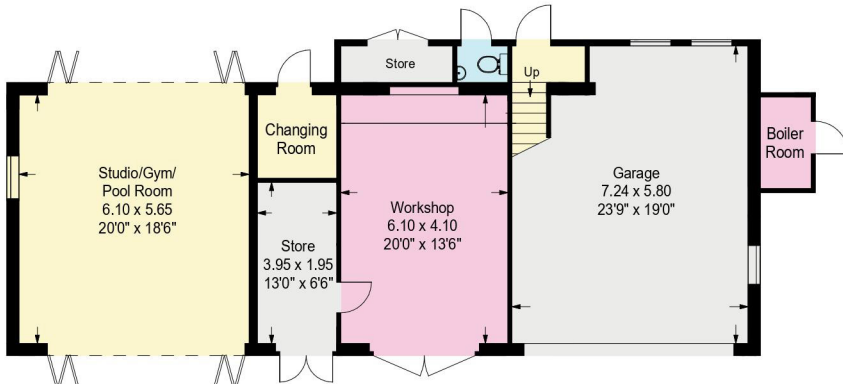
Denotes areas below 1.5m  
House: 25sq.m. or 269sq.ft.  
Attic Space: 38sq.m. or 409sq.ft.

© 2020 HOMEPLAN  
www.homeplanuk.co.uk  
Constructed in accordance with the IPMS code of measuring practice, this plan is for layout guidance only. It is not to scale, unless specified. Please check all dimensions & shapes before making any decisions reliant upon them.





First Floor (Flat)

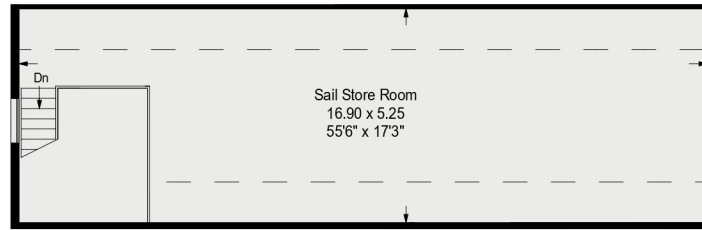


Ground Floor (Coach House)

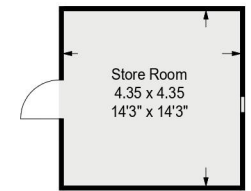
Approximate  
Gross Internal Floor Area  
Coach House: 129sq.m. or 1,389sq.ft.  
Flat: 95sq.m. or 1,023sq.ft.  
Stables & Stores: 247sq.m. or 2,659sq.ft.  
Granary: 19sq.m. or 205sq.ft.

— Denotes areas below 1.5m  
Flat: 15sq.m. or 162sq.ft.  
Loft: 30sq.m. or 323sq.ft.

© 2020 HOMEPLAN  
www.homeplanuk.co.uk  
Constructed in accordance with the IPMS code of measuring practice, this plan is for layout guidance only. It is not to scale, unless specified. Please check all dimensions & shapes before making any decisions reliant upon them.



First Floor



Granary



Stables & Stores

