

The Old Priory, Church Lane, North Woodchester GL5 5NF

Gross Internal Area (Approx.)

The Old Priory = 887 sq m / 9,547 sq ft

Priory Lodge = 101 sq m / 1,087 sq ft

Stable Cottage = 117 sq m / 1,259

Stable Block = 208 sq m / 2,238 sq ft

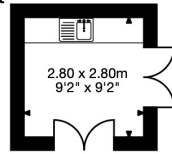
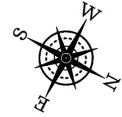
Garage = 42 sq m / 452 sq ft

Pool House and Plant Room = 112 sq m / 1,205 sq ft

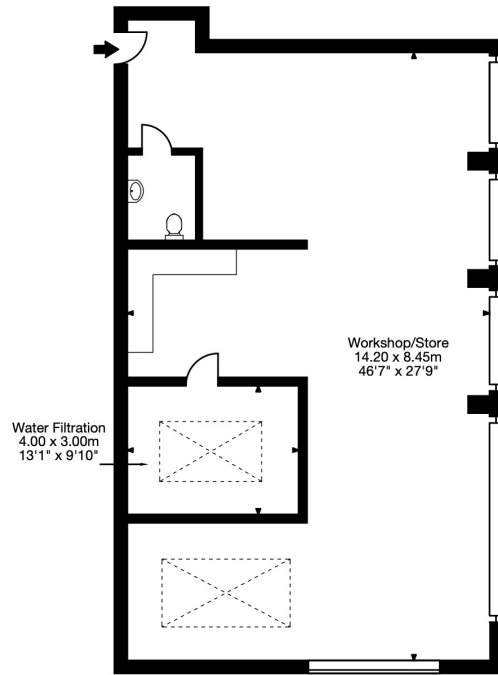
Swimming Pool = 77 sq m / 828 sq ft

Outbuildings = 129 sq m / 1,388 sq ft

Total Area = 1,673 sq m / 18,004 sq ft

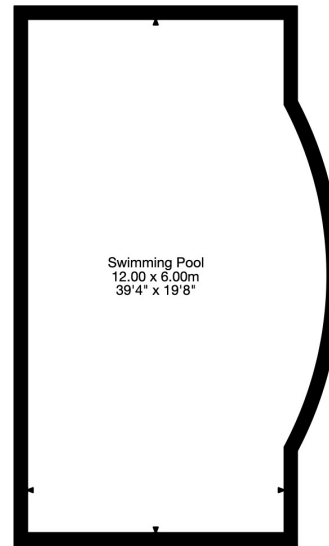


Bothy

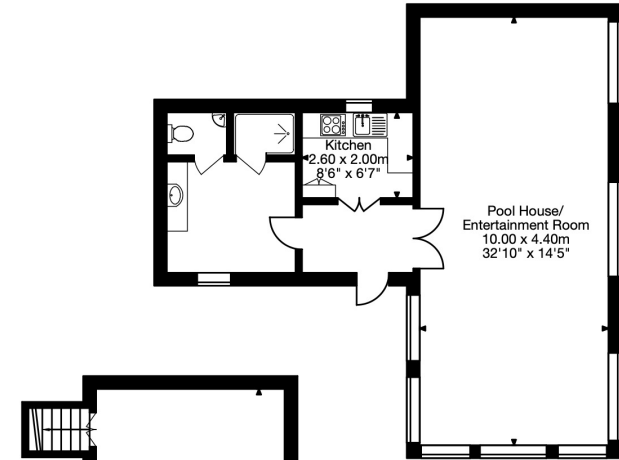


Workshop/Store

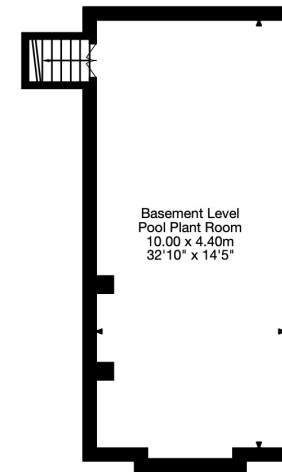
Outbuildings



Swimming Pool



Pool House



Basement Pool Plant Room

Swimming Pool Block

Capture Property Marketing 2023. Drawn to RICS guidelines.  
All Measurements are approximate and should not be relied on as a statement of fact.  
Plan is for illustration purposes only. Not drawn to scale.

The Old Priory, Church Lane, North Woodchester GL5 5NF

Gross Internal Area (Approx.)

The Old Priory = 887 sq m / 9,547 sq ft

Priory Lodge = 101 sq m / 1,087 sq ft

Stable Cottage = 117 sq m / 1,259

Stable Block = 208 sq m / 2,238 sq ft

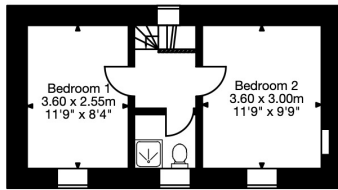
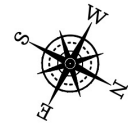
Garage = 42 sq m / 452 sq ft

Pool House and Plant Room = 112 sq m / 1,205 sq ft

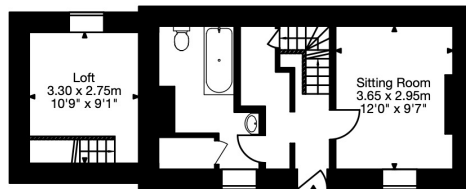
Swimming Pool = 77 sq m / 828 sq ft

Outbuildings = 129 sq m / 1,388 sq ft

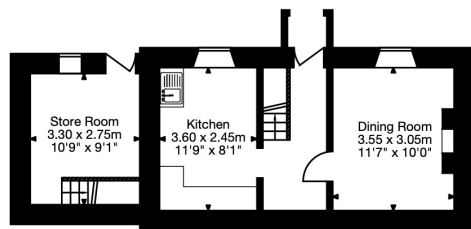
Total Area = 1,673 sq m / 18,004 sq ft



First Floor

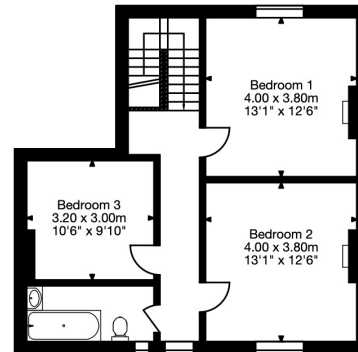


Ground Floor

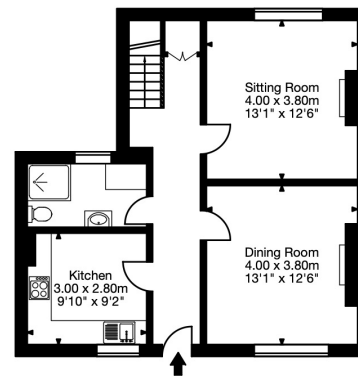


Lower Ground Floor

Priory Lodge

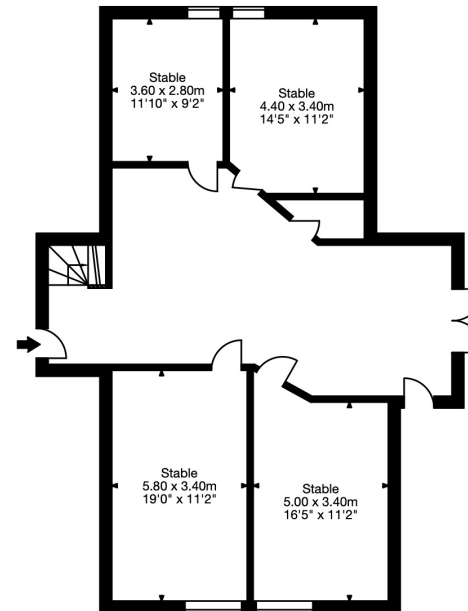


First Floor

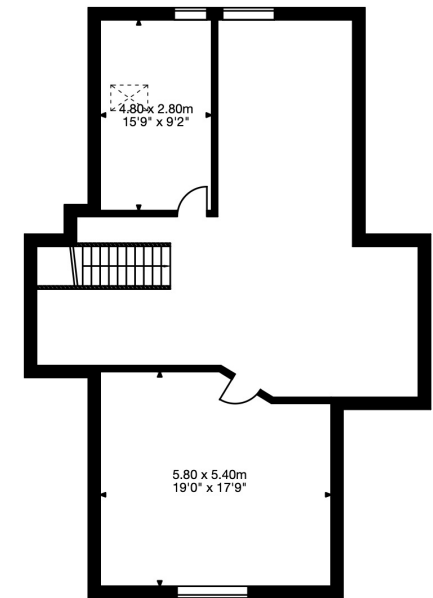


Ground Floor

Stable Cottage



Ground Floor



First Floor

Stable Block

The Old Priory, Church Lane, North Woodchester GL5 5NF

Gross Internal Area (Approx.)

The Old Priory = 887 sq m / 9,547 sq ft

Priory Lodge = 101 sq m / 1,087 sq ft

Stable Cottage = 117 sq m / 1,259

Stable Block = 208 sq m / 2,238 sq ft

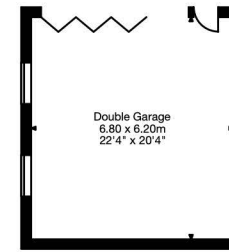
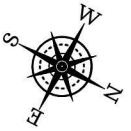
Garage = 42 sq m / 452 sq ft

Pool House and Plant Room = 112 sq m / 1,205 sq ft

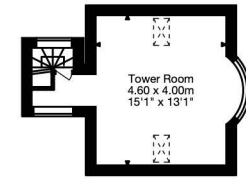
Swimming Pool = 77 sq m / 828 sq ft

Outbuildings = 129 sq m / 1,388 sq ft

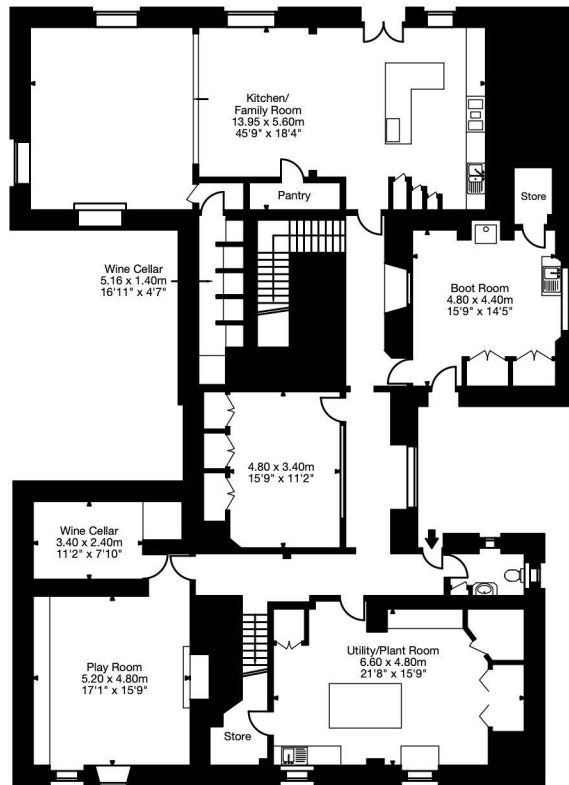
Total Area = 1,673 sq m / 18,004 sq ft



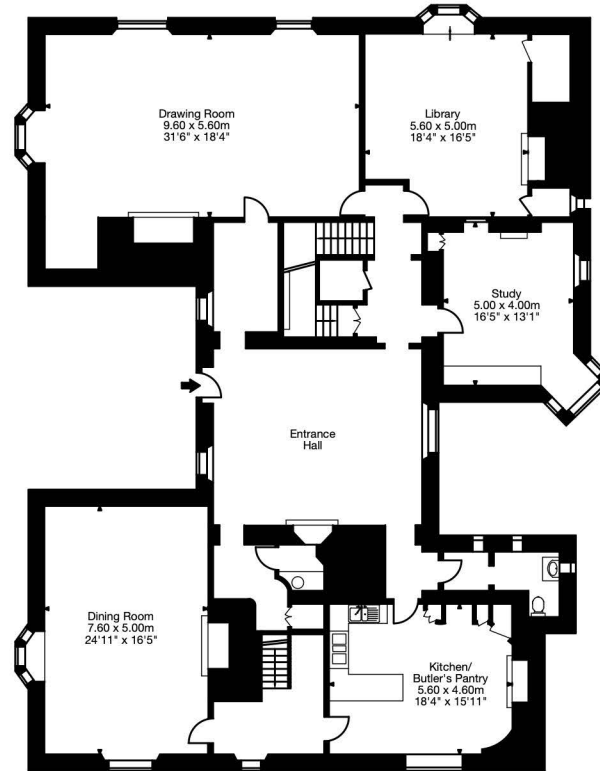
Garage



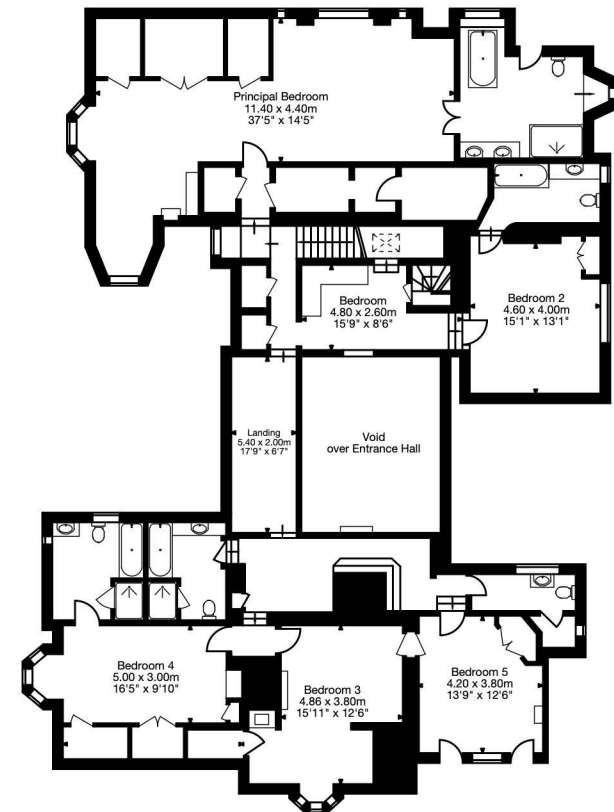
Second Floor



Ground Floor



Raised Ground Floor



First Floor

The Old Priory